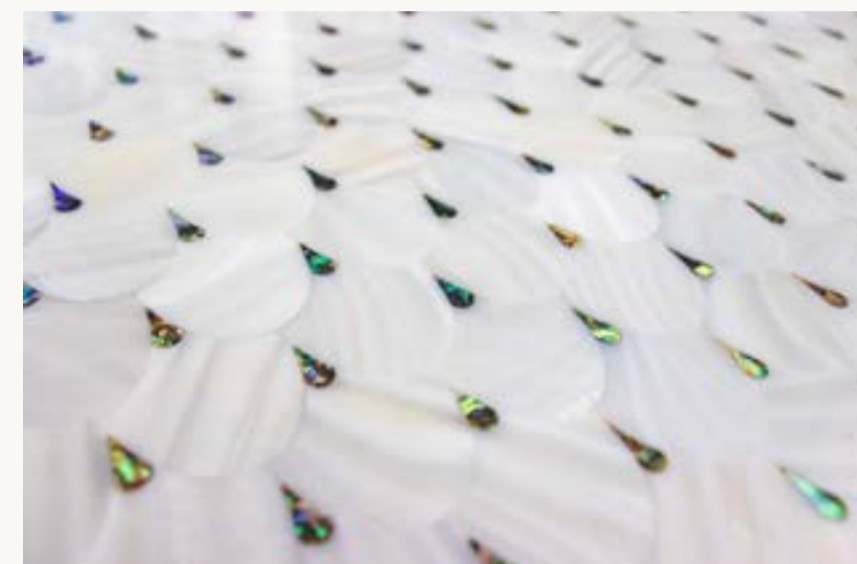


# Pearl Drop

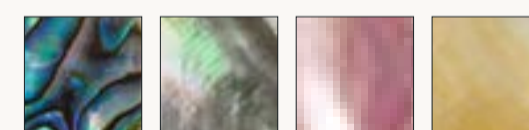
Pearl Drop uses Siminetti's most exclusive Saltwater mother of pearls, which creates a distinctive, individual depth to each pearl drop. These are one of our most awe-inspiring designs. Our Golden Pearl Drop surface was a finalist in the renowned SBID Product Design awards 2020.



## Features

- Four stunning colour ways
- Breathtaking intricate details
- Elegant saltwater pearl drops

## Colour ways



Emerald   Midnight   Sorrento   Promise

## Technical Information

Base Material	Bianco Freshwater Pearl	Applications	Internal & External
Technical information	See overleaf	Swimming Pools	No
Colour ways	4	Wet Areas	Yes
Pattern Match	Yes	Support	Aluminium / Magnesium Board / PVC Foam

# Decorative Surfaces Specifications

## Classic Collection

Style	Collection	Page	Base Material	Dimensions (Max)	Colour ways	Pattern Match	Substrate	Substrate Thickness	Weight per m2	Applications
20mm	Classic	50	Freshwater & Saltwater	120cm x 240cm	1	Yes	Aluminium/ Magnesium Board/ PVC Foam	4mm to 28mm	5 kg	Internal & External
Constantine	Classic	52	Freshwater & Saltwater	120cm x 240cm	1	Yes	Aluminium/ Magnesium Board/ PVC Foam	4mm to 28mm	5 kg	Internal & External
Hexagons	Classic	54	Freshwater & Saltwater	120cm x 240cm	1	Yes	Aluminium/ Magnesium Board/ PVC Foam	4mm to 28mm	5 kg	Internal & External

## Signature Collection

Style	Collection	Page	Base Material	Dimensions (Max)	Colour ways	Pattern Match	Substrate	Substrate Thickness	Weight per m2	Applications
Arabesque Dream	Signatures	70	Bianco Freshwater Pearl	120cm x 240cm	1	Yes	Aluminium/ Magnesium Board/ PVC Foam	4mm to 28mm	5 kg	Internal & External
Crackle	Signatures	72	Saltwater	120cm x 240cm	1	No	Aluminium/ Magnesium Board/ PVC Foam	4mm to 28mm	5 kg	Internal & External
Gemstone	Signatures	74	Saltwater	120cm x 240cm	1	Yes	Aluminium/ Magnesium Board/ PVC Foam	4mm to 28mm	5 kg	Internal & External
Interlock	Signatures	76	Saltwater	120cm x 240cm	1	Yes	Aluminium/ Magnesium Board/ PVC Foam	4mm to 28mm	5 kg	Internal & External
Pearl Drop	Signatures	78	Bianco Freshwater Pearl	120cm x 240cm	4	Yes	Aluminium/ Magnesium Board/ PVC Foam	4mm to 28mm	5 kg	Internal & External
Starlink	Signatures	80	Bianco Freshwater Pearl	120cm x 240cm	1	Yes	Aluminium/ Magnesium Board/ PVC Foam	4mm to 28mm	5 kg	Internal & External
Wave	Signatures	82	Bianco Freshwater Pearl	120cm x 240cm	1	Yes	Aluminium/ Magnesium Board/ PVC Foam	4mm to 28mm	5 kg	Internal & External
Whisper	Signatures	84	Freshwater & Saltwater	120cm x 240cm	4	No	Aluminium/ Magnesium Board/ PVC Foam	4mm to 28mm	5 kg	Internal & External
3D Cube	Signatures	86	Freshwater & Saltwater	120cm x 240cm	2	Yes	Aluminium/ Magnesium Board/ PVC Foam	4mm to 28mm	5 kg	Internal & External

## Textures Collection

Style	Collection	Page	Base Material	Dimensions (Max)	Colour ways	Pattern Match	Substrate	Substrate Thickness	Weight per m2	Applications
Chique Basket Weave	Textures	56	Bianco Freshwater Pearl	120cm x 240cm	1	Yes	Aluminium/ Magnesium Board/ PVC Foam	4mm to 28mm	5 kg	Internal & External
Chique Brick	Textures	58	Freshwater	120cm x 240cm	1	Yes	Aluminium/ Magnesium Board/ PVC Foam	4mm to 28mm	5 kg	Internal & External
Chique Fabric	Textures	60	Freshwater	120cm x 240cm	1	Yes	Aluminium/ Magnesium Board/ PVC Foam	4mm to 28mm	5 kg	Internal & External
Chique Herringbone	Textures	62	Freshwater	120cm x 240cm	1	Yes	Aluminium/ Magnesium Board/ PVC Foam	4mm to 28mm	5 kg	Internal & External
Chique Parallel	Textures	64	Freshwater	120cm x 240cm	1	Yes	Aluminium/ Magnesium Board/ PVC Foam	4mm to 28mm	5 kg	Internal & External
Pavimento Brick	Textures	66	Freshwater	120cm x 240cm	1	Yes	Aluminium/ Magnesium Board/ PVC Foam	4mm to 28mm	5 kg	Internal & External
Pavimento Cube	Textures	68	Freshwater	120cm x 240cm	1	Yes	Aluminium/ Magnesium Board/ PVC Foam	4mm to 28mm	5 kg	Internal & External

## Seasons Collection

Style	Collection	Page	Base Material	Dimensions (Max)	Colour ways	Pattern Match	Substrate	Substrate Thickness	Weight per m2	Applications
Natures Herringbone	Seasons	90	Bianco Freshwater Pearl	120cm x 240cm	2	Yes	Aluminium/ Magnesium Board/ PVC Foam	4mm to 28mm	5 kg	Internal & External
Foxglove	Seasons	92	Bianco Freshwater Pearl	120cm x 240cm	2	Yes	Aluminium/ Magnesium Board/ PVC Foam	4mm to 28mm	5 kg	Internal & External
Petal	Seasons	94	Bianco Freshwater Pearl	120cm x 240cm	2	Yes	Aluminium/ Magnesium Board/ PVC Foam	4mm to 28mm	5 kg	Internal & External
Ocean's Edge	Seasons	96	Bianco Freshwater Pearl	120cm x 240cm	2	Yes	Aluminium/ Magnesium Board/ PVC Foam	4mm to 28mm	5 kg	Internal & External
Eucalyptus	Seasons	98	Bianco Freshwater Pearl	120cm x 240cm	2	Yes	Aluminium/ Magnesium Board/ PVC Foam	4mm to 28mm	5 kg	Internal & External
Seashell	Seasons	100	Bianco Freshwater Pearl	120cm x 240cm	2	Yes	Aluminium/ Magnesium Board/ PVC Foam	4mm to 28mm	5 kg	Internal & External
Impel	Seasons	102	Bianco Freshwater Pearl	120cm x 240cm	2	Yes	Aluminium/ Magnesium Board/ PVC Foam	4mm to 28mm	5 kg	Internal & External
Encircle	Seasons	104	Bianco Freshwater Pearl	120cm x 240cm	2	Yes	Aluminium/ Magnesium Board/ PVC Foam	4mm to 28mm	5 kg	Internal & External
Silver Birch	Seasons	106	Bianco Freshwater Pearl	120cm x 240cm	2	Yes	Aluminium/ Magnesium Board/ PVC Foam	4mm to 28mm	5 kg	Internal & External
Crystal	Seasons	108	Bianco Freshwater Pearl	120cm x 240cm	2	Yes	Aluminium/ Magnesium Board/ PVC Foam	4mm to 28mm	5 kg	Internal & External
Cascade	Seasons	110	Bianco Freshwater Pearl	120cm x 240cm	2	Yes	Aluminium/ Magnesium Board/ PVC Foam	4mm to 28mm	5 kg	Internal & External
Effervescent	Seasons	112	Bianco Freshwater Pearl	120cm x 240cm	2	Yes	Aluminium/ Magnesium Board/ PVC Foam	4mm to 28mm	5 kg	Internal & External

All Decorative Surfaces achieve  
 BS EN ISO 10545-03  
 BS EN ISO 10545-09  
 BS EN ISO 10545-12

# Contact

## Siminetti – HEAD OFFICE

Gainsborough House  
Chipping Campden  
Gloucestershire  
United Kingdom  
GL55 6JX  
Tel: +44 (0)1386 897866

## Siminetti – UNITED KINGDOM

Siminetti Design Studio  
London, W2  
United Kingdom  
  
Tel: +44 (0)203 411 1373

## Siminetti – BENELUX

Ametisthorst 203  
2592HJ THE HAGUE  
The Netherlands  
  
Tel: +31 (0) 653 256 495

## Siminetti – USA (New York)

Elements of Architecture  
New York  
USA  
Tel: (+1) 646 285 1070

## Siminetti – USA (Florida)

Design Centre  
Miami, Florida  
USA  
Tel: (+1) 786 460 8539

## Siminetti – USA (California)

Los Angeles  
California  
USA  
Tel: (+1) 213 640 2545

## Siminetti – ITALY

Polaris Business Centre  
Via Falcone, 7  
20123,  
MILAN, Italy

## Siminetti – UAE

Churchill Executive Tower  
Office 410, Business Bay  
PO Box 65627  
DUBAI, UAE.

## Siminetti – QATAR

P.O.Box 30993  
DOHA  
Qatar

## Siminetti – CANADA

6685 Couture Boulevard,  
MONTREAL,  
Canada.H1P 3L7

## Siminetti – AUSTRALIA

Unit 20/75 Waterway Drive  
Commera  
QUEENSLAND 4209  
Australia

## Siminetti – SOUTH AFRICA

Montague Gardens  
Cape Town 7441  
SOUTH AFRICA

## Siminetti – MARINE (UK)

Turnchapel Wharf,  
PLYMOUTH  
England. PL9 9RQ

## Siminetti – MARINE (USA)

1470 N. Congress  
West Palm Beach  
Florida, USA

# Sustainability



## Siminetti: Proud producers of sustainable mother of pearl surfaces.

Siminetti is proud of its ethical and ecological credentials and takes the greatest care when sourcing its range of natural products, to ensure they meet strict ecological standards and are sourced from sustainable, farmed locations wherever in the world they are grown.

Our Freshwater mosaics are sourced from shell that is grown for the natural Freshwater Pearl industry. The shell, a bi-product of the Freshwater Pearl industry, is a waste product and Siminetti source the shell directly from the farms in Asia where the freshwater shells are grown.

Asia is the largest producer of Freshwater Pearls, producing some 1,500 metric tons per year and rather than simply discarding the shells from this production, Siminetti sources these shells and in conjunction with its partners produces our series of Freshwater Shell mosaics and decorative panels.

Our Mother of Pearl is sourced from Pacific communities who depend on sustainable relationships with the ocean lagoons in which they farm pearls or harvest them as a food source. Our suppliers have for generations respected the origin, growth and delicate nature of these shells. Harvesting is done in line with local Government Fishery laws and a constant communication with our suppliers ensure we are informed and accountable.

We only deal with raw material suppliers who have a full understanding of relevant practices and legislation to ensure consistent, high quality products. They must hold a fisheries export licence when appropriate, comply with biosecurity laws, provide Certificates of Origin and demonstrate evidence of the specific harvest area.

Our Mother of Pearl is sourced from regions such as Australia, Indonesia, the Philippines, the Pacific Islands, Fiji, the Solomon Islands and Tahiti. Each of our Mother of Pearl shells grows in specific regions based on water temperatures and climates.

Siminetti absolutely opposes the use of overfishing and exploitation of our World's sea beds and actively engages with ocean charities who look to sustain our oceans for the betterment of marine life and the conservation for our futures.

© 2021 Siminetti. All rights reserved.

No part of this publication may be reproduced in any material form (including photocopying or storing it in any medium by electronic means and whether or not transiently, or incidentally to some other use of this publication) without the written permission of the copyright owner.

Application for the copyright owner's permission to reproduce any part of this publication should be addressed to Siminetti. Limitations in the reprographics process mean absolute colour accuracy cannot be guaranteed. If required samples can be provided where colour accuracy is required.

Siminetti reserves the right to alter specification and designs without prior notice.