

2022 Edition



SIMINETTI®

LUXURY MOTHER OF PEARL SURFACES

• ENGLAND •

“To continually create inspirational luxury surfaces, that are crafted with passion, viewed with awe and are kind to the planet on which we live.”

– Simon Powell CEO



Contents

Introduction

Our Story	06	Our Founder	07
-----------	----	-------------	----

Mosaics Collection

Freshwater

Anthracite	10	Antique Brass	12	Bianco	14
Biscotti	16	Blush	18	Bronze	20
Copper	22	Dove Grey	24	Emerald Gold	26
Gentle Earth	28	Natural	30	Ocean Calm	32
Jade	34	Summers Day	36		

Saltwater

Golden Promise	38	Midnight Pearl	40	Innocence	42
Seduction	44	Tranquillity	46		
Shades					
Bologna	48	Napoli	50	Venecia	52
Sorrento	54				

Decorative Surfaces

Classic Collection

20mm	58	Constantine	60	Hexagons	62
------	----	-------------	----	----------	----

Textures

Chique Basketweave	64	Chique Brick	66	Chique Fabric	68
Chique Herringbone	70	Chique Parallel	72	Pavimento Brick	74
Pavimento Cube	76				

Signature Collection

Arabesque Dream	78	Crackle	80	Gemstone	82
Interlock	84	Pearl Drop	86	Starlink	88
Wave	90	Whisper	92	3D Cube	94

Seasons x Chrisanna

Nature’s Herringbone	98	Foxglove	100	Petal	102
Ocean’s Edge	104	Eucalyptus	106	Seashell	108
Impel	110	Encircle	112	Silver Birch	114
Crystal	116	Cascade	118	Effervescent	120

In Residence Collection

Ariel	124	Cordella	126	Juliet	128
Orphelia	130	Othello	132	Portia	134
Prospero	136	Romeo	138	Rosalind	140

Additional

Bespoke Design	144	Gallery	146	Install Guide	162
Technical Information	166	Contact Information	168	Sustainability	169



Our Story

Siminetti was founded in 2010 by our CEO Simon Powell, combining his passion for mosaics and luxury surface finishes. Having worked in the mosaics industry for 12 years, Simon identified the many benefits mother of pearl could offer the market and began his & Siminetti's journey. A British company based in Chipping Campden, near Stratford upon Avon, home of the renowned playwright, William Shakespeare.

Today Siminetti has representation in 6 continents ranging from North America and the Middle East to Europe and India, supporting some of the world's most luxurious commercial and residential projects with our range of 19 stunning colours of mother of pearl. Using only the finest freshwater & saltwater pearl from around the world, Siminetti has built an enviable reputation for exceptional British quality and reliability, making Siminetti the choice for many of the worlds leading architects, designers, developers and yacht builders.

Siminetti offers an unrivalled knowledge of the mother of pearl industry and along with its lifelong partners, ensures each of its clients a surface finish of exceptional quality.

Our Founder

12 years ago I had the inspiration to launch a luxury focused, sustainable, surface finishes brand. Siminetti was born out of this desire.

Combining creativity with one of nature's very own luxurious materials, I cannot be more proud to see Siminetti surfaces are now found in some of the world's most luxurious properties, super-yachts and hotels.

The last decade has been a whirlwind of creativity mixed with both highs and lows but more importantly one that inspires me each morning with new challenges and ideas.

Thank you to everyone who has supported me and Siminetti on our journey thus far... I look forward to where the road takes us over the next decade.



A stylized, handwritten signature in dark ink, appearing to read "S. A. F. B." with a large, sweeping flourish at the end.



Mosaics Collection

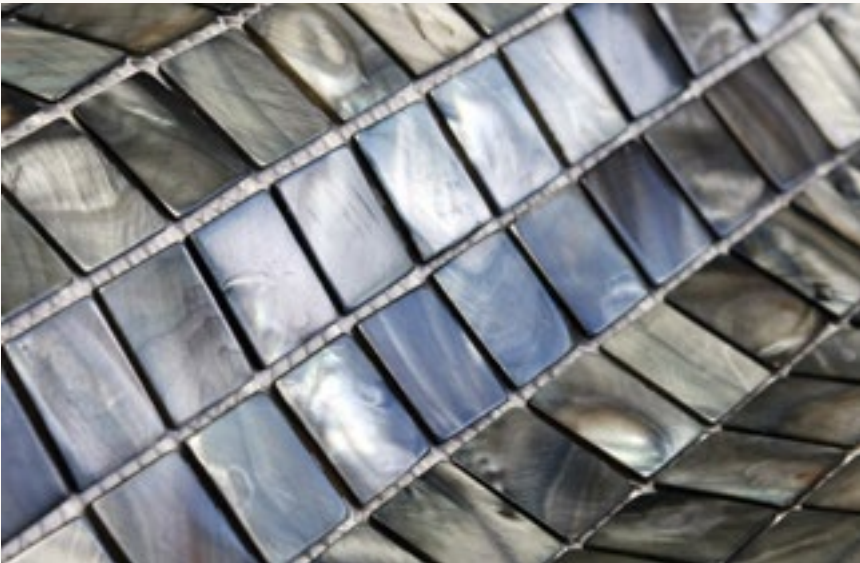
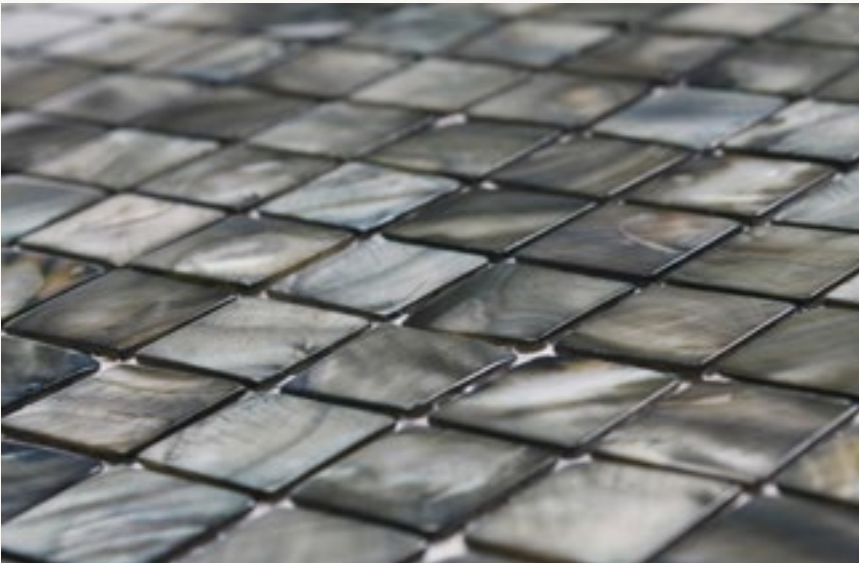
Our Mother of Pearl mosaic tiles are sourced from eco-friendly, sustainable sources, are exceptionally strong and suitable for wall and floor surfaces.

Our collection offers a unique form of decoration, unrivalled by man made products and can be seen in many of the worlds leading spas, hotels, private homes, swimming pools and super-yachts.



Anthracite

Anthracite is the perfect mix of greys for a neutral yet luxurious feel. Complement any bathroom or wet room with gorgeous grey mosaic tiles from Siminetti. Hints of blue accentuate each tesserae and cause attractive reflections.



Features

- Blue iridescent tones flow through each tesserae
- Unique structure can contour to complex curves
- Ideal for wet areas

Styles



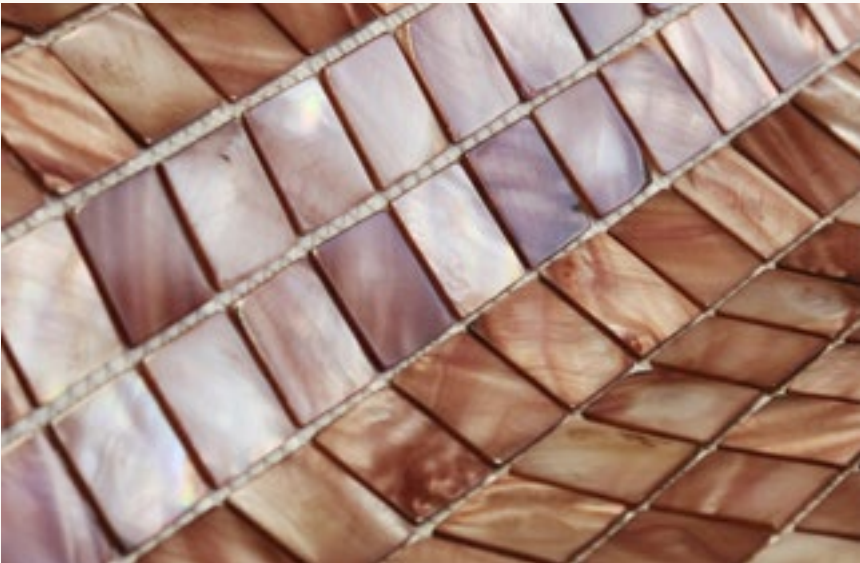
Technical Information

Base Material	Freshwater	Support	Mesh or Paper
Technical information	See page 160	Applications	Internal
Styles	12	Swimming Pools	No
Recommended Grout	Anthracite	Wet Areas	Yes



Antique Brass

Create a sophisticated and luxurious feel with deep earthy tones and rich chocolate hues. Siminetti’s Antique Brass mosaic tiles are suitable for internal use such as feature walls, wet areas and spas.



Features

- Adds a bold touch of exuberance to any space
- Subtle tonal oscillation
- Ideal for wet areas

Styles



Technical Information

Base Material	Freshwater	Support	Mesh or Paper
Technical information	See page 160	Applications	Internal
Styles	4	Swimming Pools	No
Recommended Grout	Brown	Wet Areas	Yes



Bianco

Our stunning Bianco mosaic tiles are perfect for accompanying any colour scheme. Suitable for internal and external use, including bathrooms, wet areas, swimming pools, feature walls and spas. A popular choice for a timeless and clean look.



Features

- An elegant choice for the most discerning abodes
- Subtle tone & textures complement any luxury scheme
- Effortless to keep clean with a natural shimmer

Styles



Technical Information

Base Material	Freshwater	Support	Mesh or Paper
Technical information	See page 160	Applications	Internal & External
Styles	12	Swimming Pools	Yes
Recommended Grout	White	Wet Areas	Yes



Biscotti

Biscotti encompassing the most inspiring organic shapes with gorgeous mottled nutty tones, polished smooth to the touch and sealed to ensure a uncompromising finish for the most striking interiors.



Features

A mottled finish with nutty tones

Complex organic shapes with bold character

Ideal as a contrasting feature

Styles



Technical Information

Base Material	Freshwater	Support	Mesh or Paper
Technical information	See page 160	Applications	Internal
Styles	5	Swimming Pools	No
Recommended Grout	White	Wet Areas	Yes



Blush

Siminetti’s luxurious Blush mosaic tiles. A blend of stunning blush pinks, soft whites and beautiful shimmering pearl for a calming and gentle rosy appearance.



Features

- Blush pinks & calming white highlights
- Moorish vibrant bold appeal
- Add depth & colour to your scheme

Styles



Technical Information

Base Material	Freshwater	Support	Mesh or Paper
Technical information	See page 160	Applications	Internal
Styles	5	Swimming Pools	No
Recommended Grout	Silver	Wet Areas	Yes



Bronze

Add a warm glow to a wetroom or spa with a shimmering feature wall. Simintetti’s Bronze Mosaic Tiles consist of a perfect blend of rich bronze and warm amber hues.



Features

- Versatile understated colour way
- Highly decorative choice
- Caramel & Amber hues

Styles



Technical Information

Base Material	Freshwater	Support	Mesh or Paper
Technical information	See page 160	Applications	Internal
Styles	4	Swimming Pools	No
Recommended Grout	Caramel	Wet Areas	Yes



Copper

Our Copper mosaic tiles are reminiscent of a warm autumn sunset and crafted with Siminetti’s expert knowledge of Mother of Pearl. Our Copper mosaic tiles are suitable for both wall and floor use.



Features

Warming autumnal tones

Subtle variations in tesserae colours add depth

Perfectly suited as a statement kitchen splashback

Styles



Technical Information

Base Material	Freshwater	Support	Mesh or Paper
Technical information	See page 160	Applications	Internal
Styles	4	Swimming Pools	No
Recommended Grout	Terracotta	Wet Areas	Yes



Dove Grey

Dove Grey, is a Freshwater Pearl mosaic with grey colouring and earthy brown undertones. Available in twelve styles Dove Grey is a versatile choice suited to hotels, receptions, wellness areas & private residences.



Features

- High gloss polished finish for a premium aesthetic
- Rich earthy tones balanced with a grey base
- An impressive range of available styles

Styles



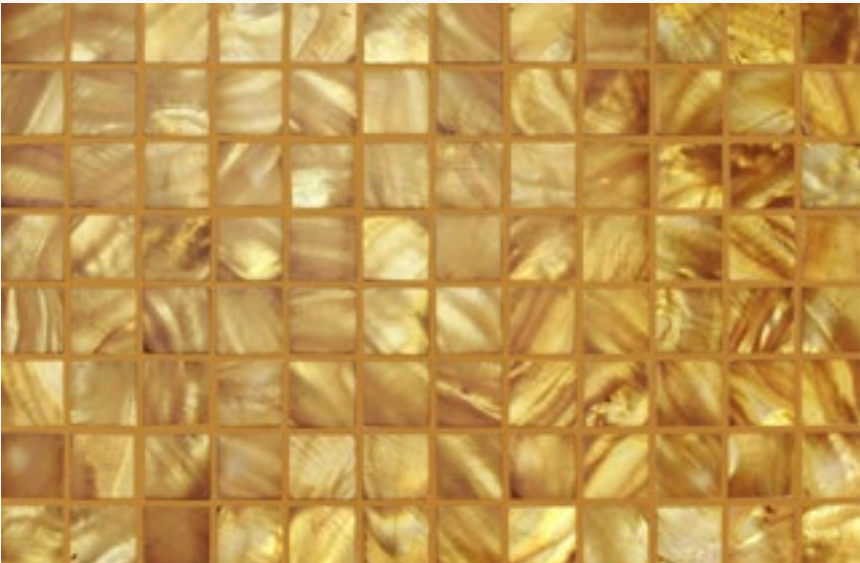
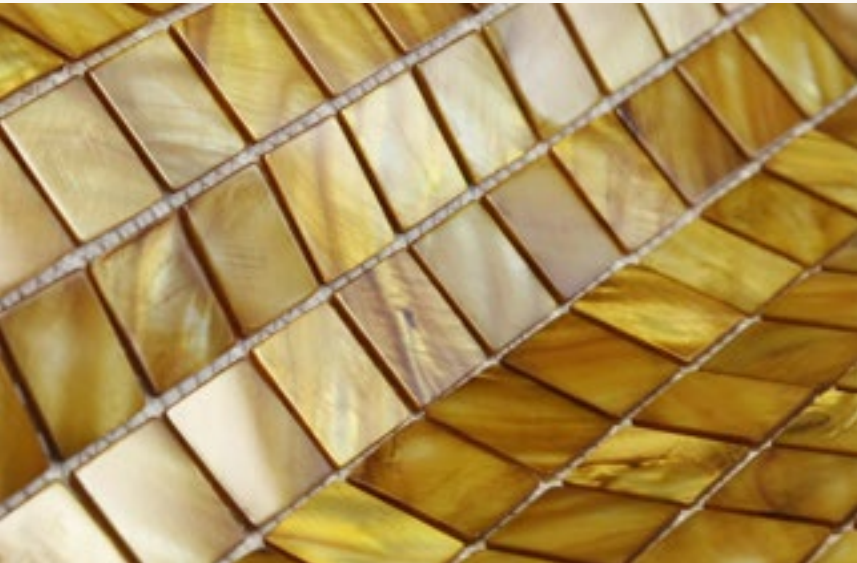
Technical Information

Base Material	Freshwater	Support	Mesh or Paper
Technical information	See page 160	Applications	Internal
Styles	12	Swimming Pools	No
Recommended Grout	Dove Grey	Wet Areas	Yes



Emerald Gold

Emerald Gold mosaic tiles add a beautiful modern finish to any internal area. A full-bodied colour choice that will draw you in with honey like hues creating a velvety comfortable ambiance.



Features

Rich amber hues

Captures and reflects light making a strong statement

Suitable for bathrooms & kitchen walls

Styles



Technical Information

Base Material	Freshwater
Technical information	See page 160
Styles	4
Recommended Grout	Caramel

Support	Mesh or Paper
Applications	Internal
Swimming Pools	No
Wet Areas	Yes



Gentle Earth

A popular choice for internal walls and floors, Siminetti’s Gentle Earth mosaic tiles are a classic and timeless choice for adding detail to the most discerning locations. Choose this colour in a fantail style to add a unique twist to a feature wall.



Features

An Enriching Earthy colour

Harmonise with naturals for a calming space

Keep yourself grounded with ties back to nature

Styles



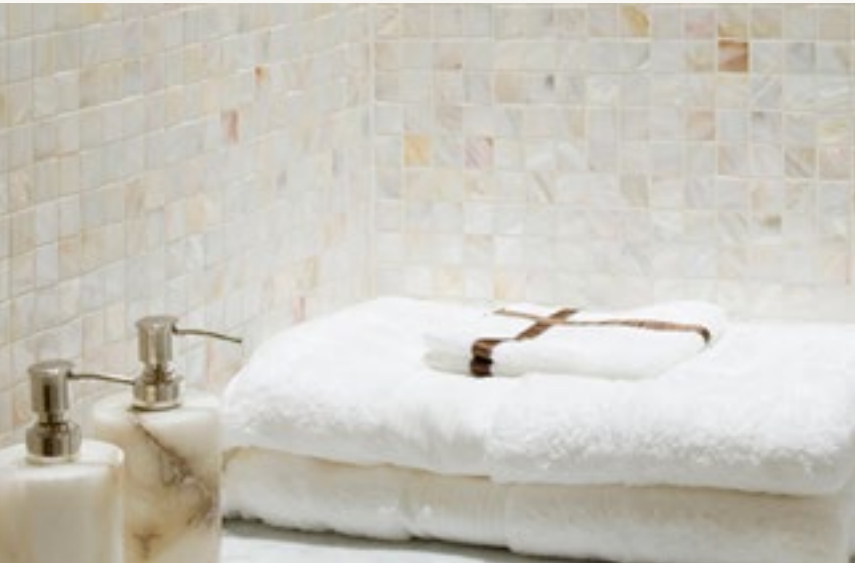
Technical Information

Base Material	Freshwater	Support	Mesh or Paper
Technical information	See page 160	Applications	Internal
Styles	12	Swimming Pools	No
Recommended Grout	Walnut	Wet Areas	Yes



Natural

Timeless natural tones that will accentuate any theme. The perfect choice for those wishing to implement a discreet – minimalistic style to their residence, hotel or wellness facility.



Features

As nature intended

Feel close to nature with raw mother of pearl colours

Soften bold colours

Styles



Technical Information

Base Material	Freshwater	Support	Mesh or Paper
Technical information	See page 160	Applications	Internal & External
Styles	12	Swimming Pools	Yes
Recommended Grout	White	Wet Areas	Yes



Ocean Calm

Choose Ocean Calm for a calming, cool and serene experience. Utilise as a bold detail alongside greys and whites to create a scheme that is refreshing and inviting.



Features

Light & Refreshing colour

Great for adding light to a darker area of your home

Enticing cyan highlights

Styles



Technical Information

Base Material	Freshwater	Support	Mesh or Paper
Technical information	See page 160	Applications	Internal
Styles	4	Swimming Pools	No
Recommended Grout	White	Wet Areas	Yes



Jade

Jade possesses a deeper greener hue than Oceans calm. More reminiscent of the deep mineral enriched green lakes of Turkey. A rich emerald blue crafted with Siminetti’s renowned expertise.



Features

Features a vibrant Emerald blue tone

Serene, peaceful & refreshing effect

Contemporary colour way to enhance any room

Styles



Technical Information

Base Material	Freshwater	Support	Mesh or Paper
Technical information	See page 160	Applications	Internal
Styles	4	Swimming Pools	No
Recommended Grout	Moss	Wet Areas	Yes



Summers Day

Summers Day mosaic tiles are the perfect way to add character, colour and vibrancy. Encapsulate the colour of summer into your interior scheme to craft an energetic-inspiring space.



Features

Connotations of traditional Mediterranean resorts

Sure to bring joy wherever used

Distinctly different

Styles



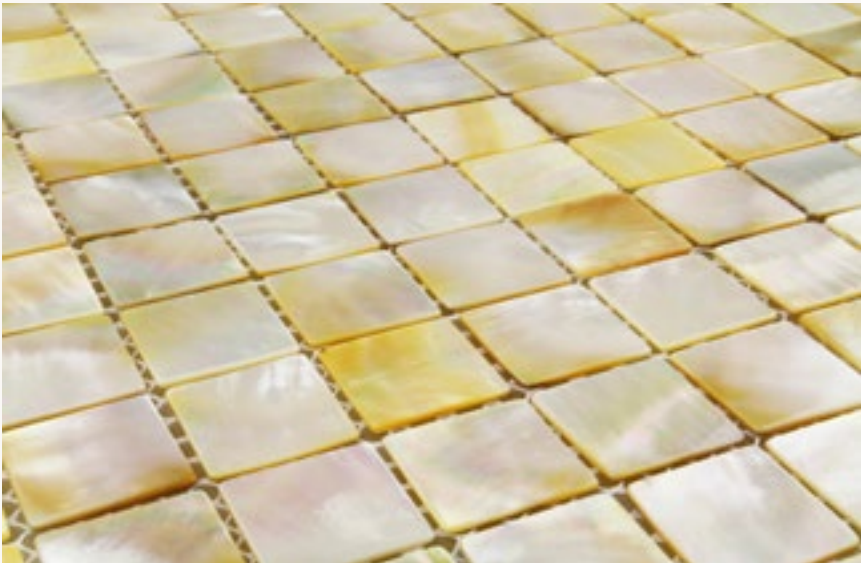
Technical Information

Base Material	Freshwater	Support	Mesh or Paper
Technical information	See page 160	Applications	Internal
Styles	4	Swimming Pools	No
Recommended Grout	Yellow	Wet Areas	Yes



Golden Promise

Make a statement with Golden Promise, silver and golden yellow mosaic tiles with strong iridescent qualities. Use to frame a focal point, filling the space with refreshing colour & light.



Features

Reflective silver and yellow colouring

Distinctive & bold choice for making a statement

Use as a contrasting focal point.

Styles



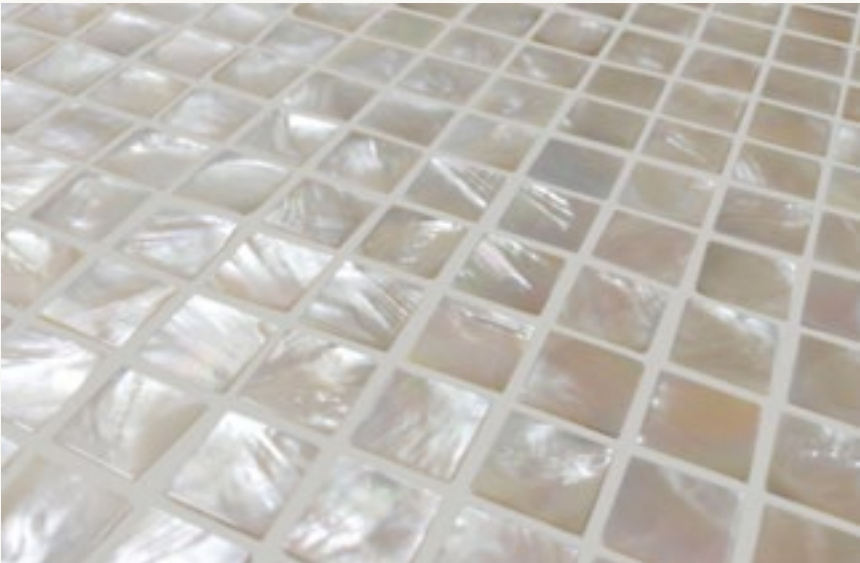
Technical Information

Base Material	Saltwater	Support	Mesh or Paper
Technical information	See page 160	Applications	Internal & External
Styles	10	Swimming Pools	Yes
Recommended Grout	Silver	Wet Areas	Yes



Innocence

Innocence is a Saltwater Pearl mosaic available in 8 differing surface styles. Light dances on the surface of this stunning natural material and reflects with a spectrum of awe-inspiring opalescent colours.



Features

- The most luxurious mosaic in our collection
- Produced in incredibly small numbers
- Highly Pearlescent finish

Styles



Technical Information

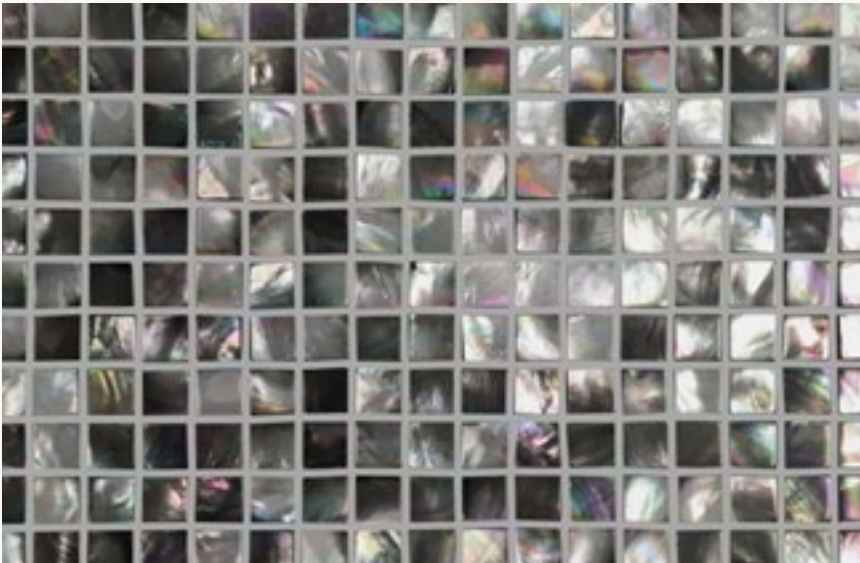
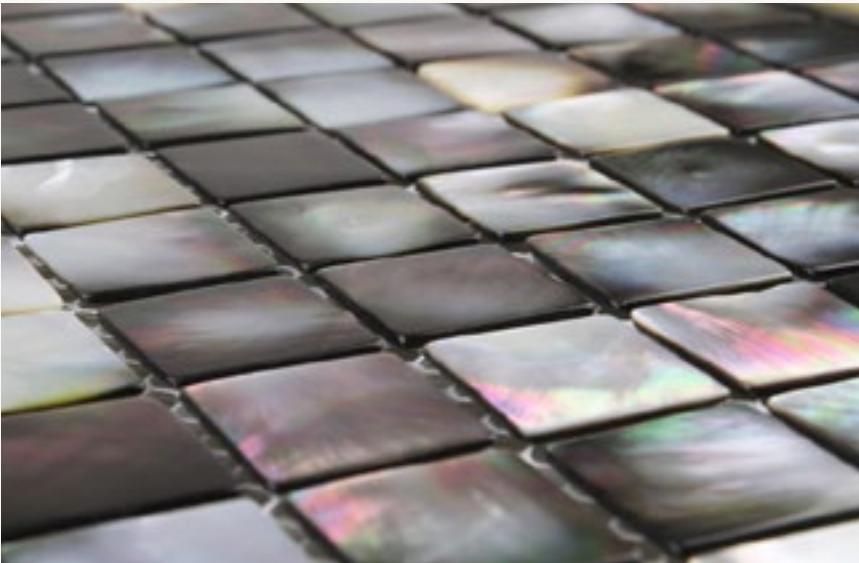
Base Material	Saltwater
Technical information	See page 160
Styles	8
Recommended Grout	Silver

Support	Mesh or Paper
Applications	Internal & External
Swimming Pools	Yes
Wet Areas	Yes



Midnight Pearl

Midnight Pearl, is a Saltwater Pearl mosaic with an undoubtedly Pearlescent blend of greys, purple, green & white. An opulent choice for the most sophisticated pallets.



Features

- Shades of grey with a stunning holographic shift
- Pairs exquisitely with natural tones
- An opulent choice

Styles



Technical Information

Base Material	Saltwater	Support	Mesh or Paper
Technical information	See page 160	Applications	Internal & External
Styles	10	Swimming Pools	Yes
Recommended Grout	Silver	Wet Areas	Yes



Seduction

Seduction, is one of our most exclusive Saltwater Pearl mosaic and is available in 2 differing surface styles. Featuring a spectrum of blues and greens Seduction is a statement choice. Best used as a accenting feature; inlay into mirrors surrounds, cupboard doors or use in wet areas adding decorative stripes or hints of colour.



Features

- The highest variation of colour of any of our mosaics
- Eccentric & compelling colours are sure to amaze
- Ideal as a contrasting feature

Styles



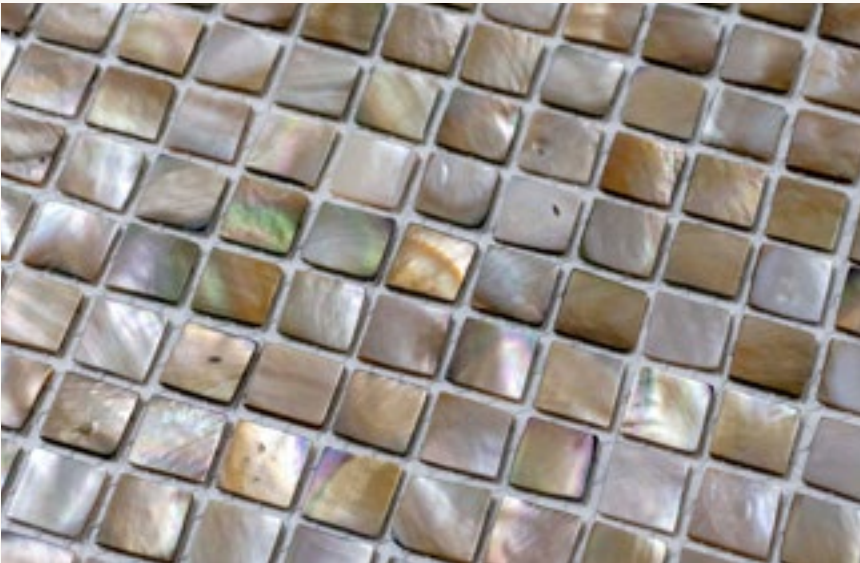
Technical Information

Base Material	Saltwater	Support	Mesh or Paper
Technical information	See page 160	Applications	Internal & External
Styles	2	Swimming Pools	Yes
Recommended Grout	Invisible	Wet Areas	Yes



Tranquillity

Tranquillity is a Saltwater Pearl mosaic with a rich vintage hue, most suitably used as a bold jewellery feature of a room. Iridescent tones flow through the earthy base colour accented with white highlights.



Features

- Unreproducible by any man-made processes
- Rich earthy tones with iridescent reflections
- The jewel of any room

Styles



Technical Information

Base Material	Saltwater
Technical information	See page 160
Styles	2
Recommended Grout	Beige

Support	Mesh or Paper
Applications	Internal & External
Swimming Pools	Yes
Wet Areas	Yes



Bologna

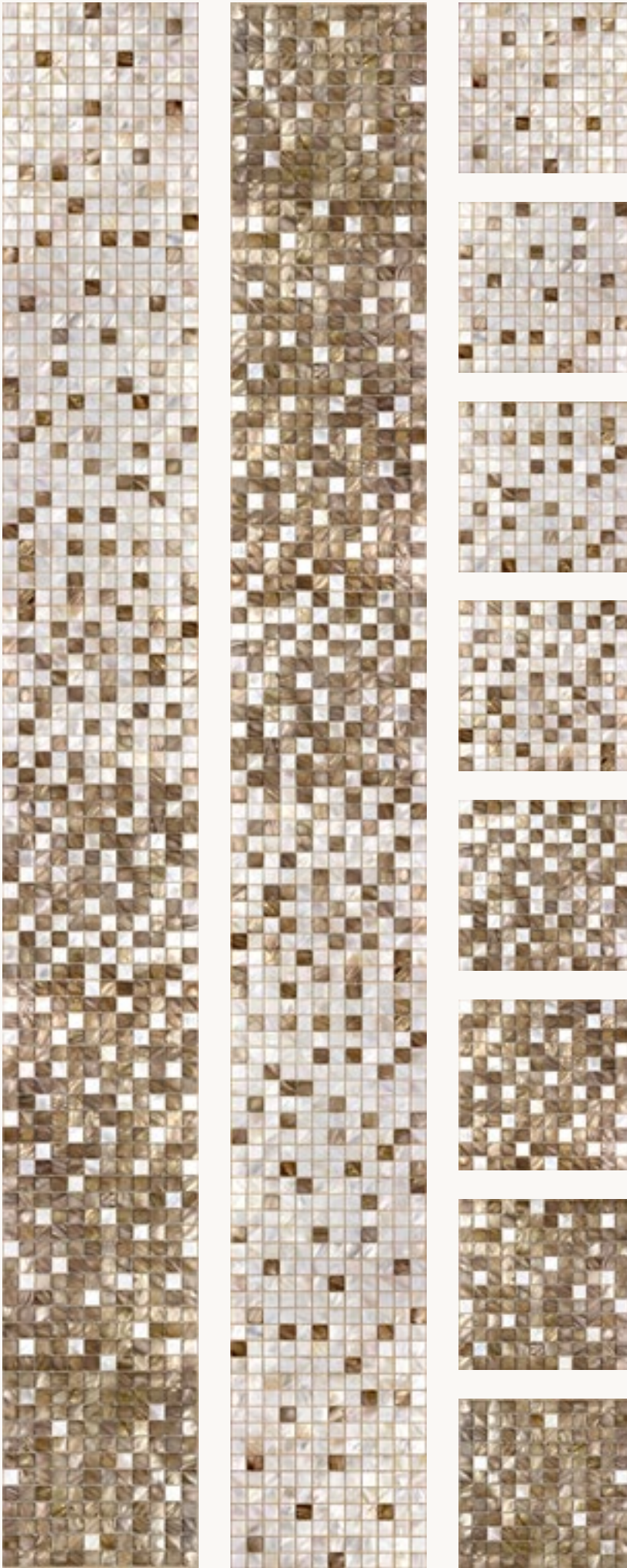
A blend of Natural and Gentle Earth results in this striking but natural, earthy look. Beautifully engages with neutral surrounding tones, to create a stunning feature wall.

Features

- Muted tones create a warming welcoming effect.
- Use for feature walls, spas, backsplashes & showers
- Consists of 8 sheets to create full shade

Technical Information

Base Material	Freshwater
Technical information	See page 160
Styles	2
Recommended Grout	Beige
Support	Mesh or Paper
Applications	Internal
Swimming Pools	No
Wet Areas	Yes





Napoli

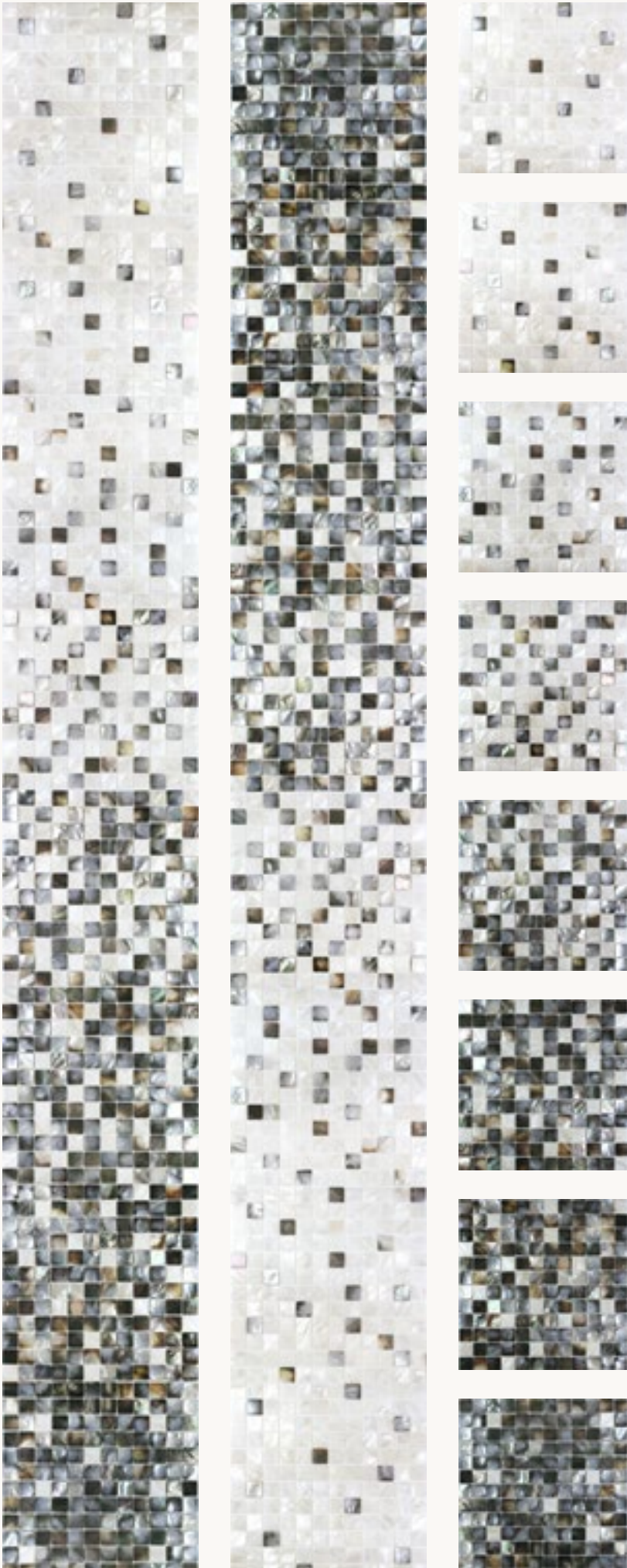
An exclusive mix of freshwater and saltwater pearl make this a striking blend, taking your eye from light to dark or vice versa. Finish your ceiling or floor in the complimenting shade.

Features

- An almost monochrome shade with colourful highlights.
- 8 sheets containing Midnight Pearl & Bianco.
- Stunning mixture of Saltwater & Freshwater.

Technical Information

Base Material	Saltwater & Freshwater
Technical information	See page 160
Mixes	8
Recommended Grout	Neutral
Support	Mesh or Paper
Applications	Internal & External
Swimming Pools	Yes
Wet Areas	Yes





Venecia

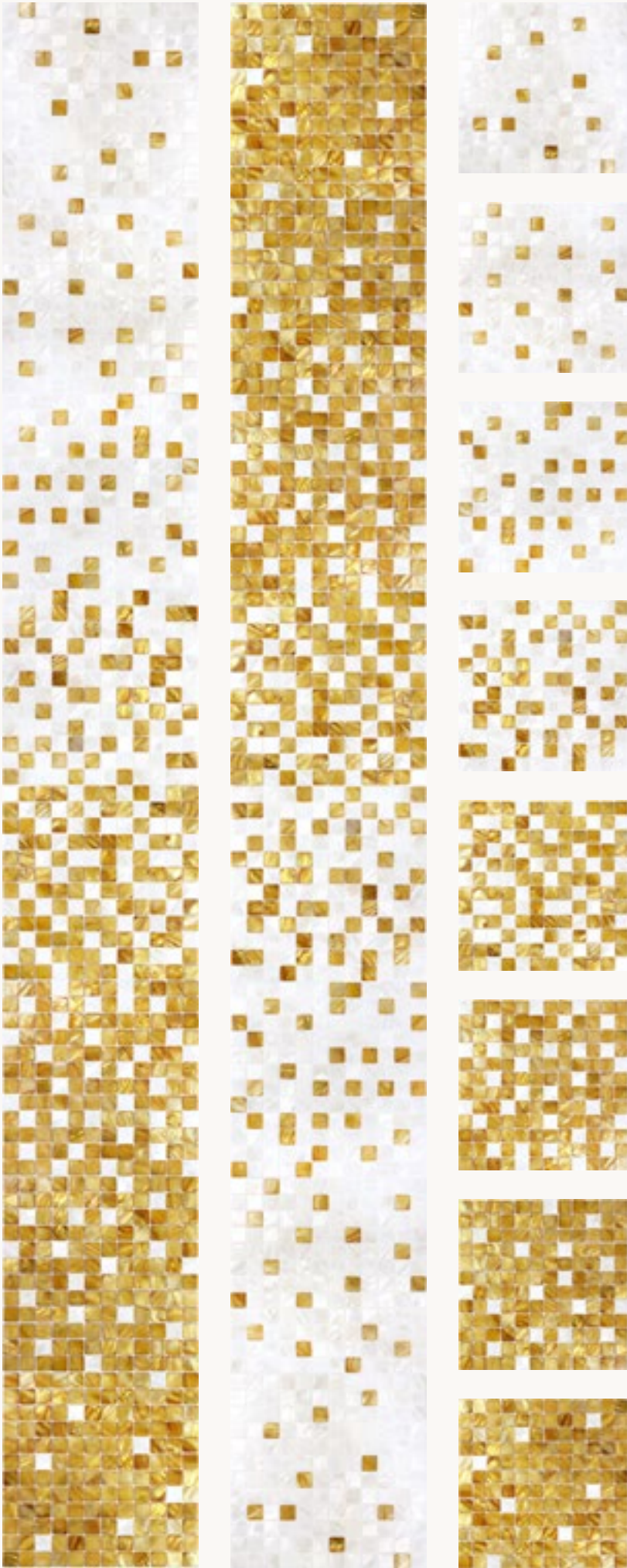
Golden tones blend through this striking Mother of Pearl shade. Defining a luxury feel and highlighting the beauty of Mother of Pearl is the essence of this Shade.

Features

- Adds personality to any space
- Rich golden hues transition into opulent whites
- Variations between sets avoid repeats.

Technical Information

Base Material	Freshwater
Technical information	See page 160
Mixes	8
Recommended Grout	White
Support	Mesh or Paper
Applications	Internal
Swimming Pools	No
Wet Areas	Yes





Sorrento

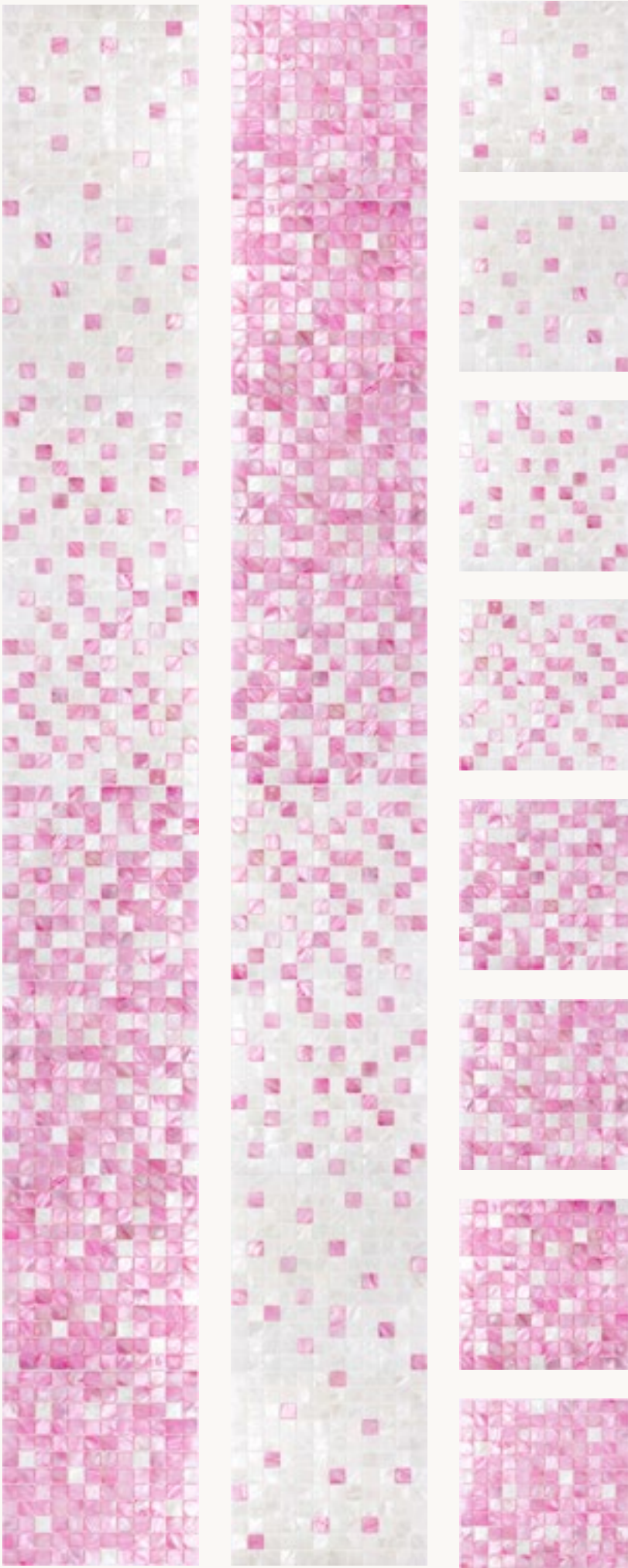
Striking tones of pink make Sorrento Shade a statement that draws eyes from every angle. Co-ordinate with matching floor and ceiling mosaics to make a prominent statement.

Features

- A bold statement shade which draws your eyes
- Feminine pinks transition into bright whites
- Charming & Romantic

Technical Information

Base Material	Freshwater
Technical information	See page 160
Mixes	8
Recommended Grout	White
Support	Mesh or Paper
Applications	Internal
Swimming Pools	No
Wet Areas	Yes



Feature Wall Panels

Our exclusive Mother of Pearl Feature Wall Panels are the next generation in stunning Mother of Pearl finishes. Handcrafted and hand assembled by our team of Artisans, Siminetti Feature Wall Panels are the foremost in stylish, luxury finishes, with each design produced to our clients exacting dimension.

Combining practicality with ease of installation, Siminetti Feature Wall Panels are the latest dimension for stylish, exacting interiors.



20mm

Seamless, smooth and square with a beautiful finish. Discover the luxurious feel of Siminetti’s 20mm decorative surfaces. An elegant finishing touch to any room, residential, commercial or wellness.



Features

Minimalistic style

Accent with Black Fixtures & Fittings

Ideal for wet areas requiring no grouting or sealing

Colour ways



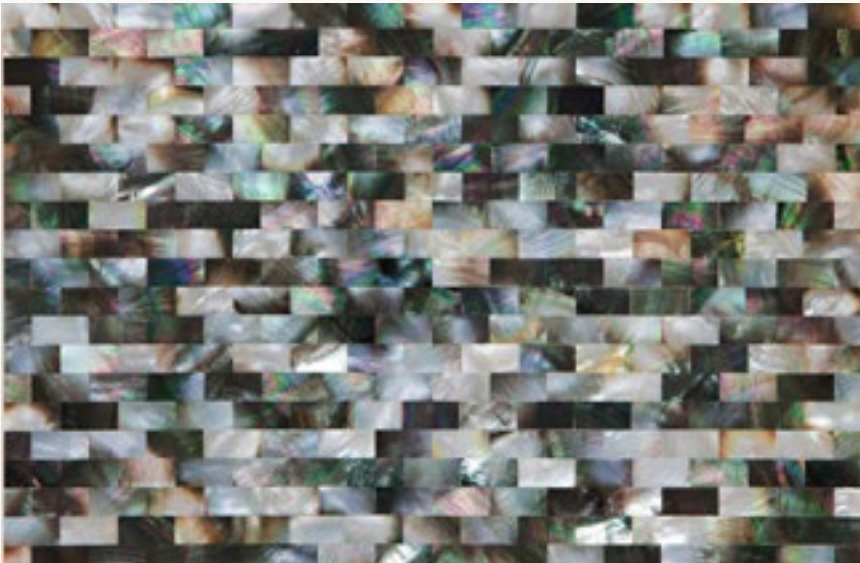
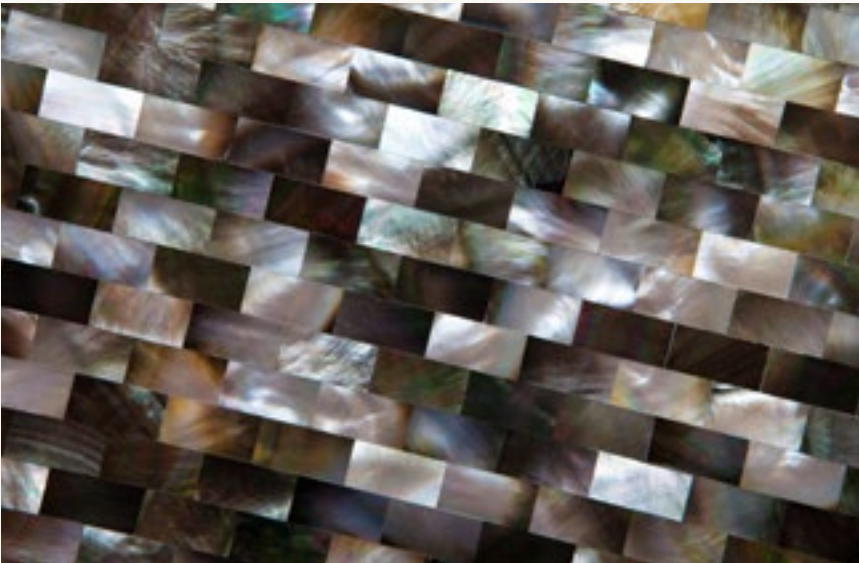
Technical Information

Base Material	Freshwater or Saltwater	Applications	Internal & External
Technical information	See page 160	Swimming Pools	No
Colour ways	5	Wet Areas	Yes
Pattern Match	Yes	Support	Aluminium / Magnesium Board / PVC Foam



Constantine

Modern, simplistic, and versatile. Siminetti’s brick decorative surfaces are a perfect choice for adding texture to any statement room. Available in 5 stunning colour ways ensuring a solution to meet your colour scheme.



Features

- Brick Style structure
- Exclusive to Siminetti
- Sealed for use in wet areas
- Requires no grouting

Colour ways



Technical Information

Base Material	Freshwater or Saltwater	Applications	Internal & External
Technical information	See page 160	Swimming Pools	No
Colour ways	5	Wet Areas	Yes
Pattern Match	Yes	Support	Aluminium / Magnesium Board / PVC Foam



Hexagons

Make your walls and flooring stand out with Siminetti’s hexagon decorative surfaces. Each tesserae beautifully cut and sealed by hand by our expert artisans.



Features

Geometric

Subtle design

Exclusive to Siminetti

Colour ways



Technical Information

Base Material	Freshwater or Saltwater	Applications	Internal & External
Technical information	See page 160	Swimming Pools	No
Colour ways	5	Wet Areas	Yes
Pattern Match	Yes	Support	Aluminium / Magnesium Board / PVC Foam



Chique Basketweave

Outstanding reflections and a slight curve on the square. Siminetti’s Basketweave Decorative surfaces have incredible texture and shadows. A timeless design that will impress the most exquisite of tastes.



Features

Stunning Texture

Will diffuse and reflect light back into the room

Colour ways



Bianco

Technical Information

Base Material	Bianco Freshwater Pearl	Applications	Internal & External
Technical information	See page 160	Swimming Pools	No
Colour ways	1	Wet Areas	Yes
Pattern Match	Yes	Support	Aluminium / Magnesium Board / PVC Foam



Chique Brick

A popular choice for internal walls and floors, Siminetti’s Chique Brick is a classic and timeless choice for adding detail to kitchens, bathrooms, spas and floors.



Features

Linear repeating pattern

Chique texture

Colour ways



Bianco

Technical Information

Base Material	Bianco Freshwater Pearl	Applications	Internal & External
Technical information	See page 160	Swimming Pools	No
Colour ways	1	Wet Areas	Yes
Pattern Match	Yes	Support	Aluminium / Magnesium Board / PVC Foam



Chique Fabric

An abstract twist on the ordinary Chique surfaces utilising the finest mother of pearl. Siminetti’s Chique Fabric decorative surfaces add quirkiness and texture to interior and exterior walls and floors. The design elevates our Chique pattern with a central jewelling feature.



Features

- Statement chique pattern with a jewelling feature
- Complex design with effortless installation
- Unique design to Siminetti

Colour ways



Emerald

Technical Information

Base Material	Freshwater & Saltwater	Applications	Internal & External
Technical information	See page 160	Swimming Pools	No
Colour ways	1	Wet Areas	Yes
Pattern Match	Yes	Support	Aluminium / Magnesium Board / PVC Foam



Chique Herringbone

A distinctive pattern which is less linear than a traditional chevron styling. Intricate details that will capture your curiosity & inspire.



Features

- Complements period homes
- Uncompromising design
- Timeless elegance

Colour ways



Bianco

Technical Information

Technical information	See page 160	Applications	Internal & External
Technical information	See page 125	Swimming Pools	No
Colour ways	1	Wet Areas	Yes
Pattern Match	Yes	Support	Aluminium / Magnesium Board / PVC Foam



Chique Parallel

A choice which is sure to set you apart from the rest. A bold look in a subtle colour giving great texture and subtle light reflections.



Features

Bold intricate details

Subtle colours

Impressive reflections

Colour ways



Bianco

Technical Information

Base Material	Bianco Freshwater Pearl	Applications	Internal & External
Technical information	See page 160	Swimming Pools	No
Colour ways	1	Wet Areas	Yes
Pattern Match	Yes	Support	Aluminium / Magnesium Board / PVC Foam



Pavimento Brick

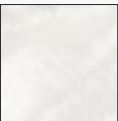
Modern, simplistic, and versatile. Pavimento Brick is a perfect choice for adding texture to bathrooms, kitchens, spas and wellness areas.



Features

- Subtle enhancement to any space
- Chamfered texture
- Minimalistic colour

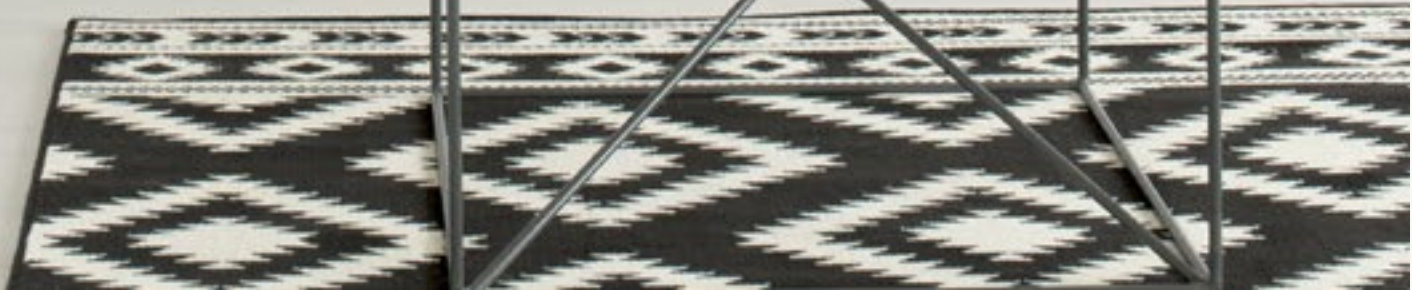
Colour ways



Bianco

Technical Information

Base Material	Bianco Freshwater Pearl	Applications	Internal & External
Technical information	See page 160	Swimming Pools	No
Colour ways	1	Wet Areas	Yes
Pattern Match	Yes	Support	Aluminium / Magnesium Board / PVC Foam



Pavimento Cube

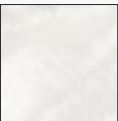
The more linear alternative to Pavimento Brick. Equal sized squares line up neatly with stunning texture and chamfered edges. A great option for period homes.



Features

- Linear design
- Great texture
- Hard wearing

Colour ways



Bianco

Technical Information

Base Material	Bianco Freshwater Pearl	Applications	Internal & External
Technical information	See page 160	Swimming Pools	No
Colour ways	1	Wet Areas	Yes
Pattern Match	Yes	Support	Aluminium / Magnesium Board / PVC Foam



Arabesque Dream

Arabesque Dream, inspired by traditional Arabian patterns & colours. The level of craftsmanship in this design is truly stunning. Featuring Freshwater & Saltwater Mother of Pearl, Arabesque Dream is available in two stunning colour combinations.



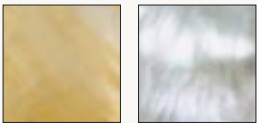
Features

Intricate repeat pattern

Reinterpretation of traditional Arabic artwork

Available with either Golden Promise or Innocence detailing

Colour ways



Promise Innocence

Technical Information

Base Material	Freshwater & Saltwater	Applications	Internal & External
Technical information	See page 160	Swimming Pools	No
Colour ways	2	Wet Areas	Yes
Pattern Match	Yes	Support	Aluminium / Magnesium Board / PVC Foam



Crackle

Crackle and its unique design reflects light and texture from every angle. Strong iridescent colours flow through the surface with an underlining silver tone. Small cracks crafted into the surface create dramatic texture but are resin sealed and smooth to the touch, ensuring a long lasting strong surface.



Features

Iridescent colours

Small cracks flow through the panel

Smooth to the touch

Colour ways



Innocence

Technical Information

Base Material	Saltwater	Applications	Internal & External
Technical information	See page 160	Swimming Pools	No
Colour ways	1	Wet Areas	Yes
Pattern Match	Yes	Support	Aluminium / Magnesium Board / PVC Foam



Gemstone

A stunning surface design which acts as a great alternative to the chic fabric surface, offering a smoother finish and impactful hints of colour.



Features

- Impactful hints of colour
- Geometric design
- Statement feature

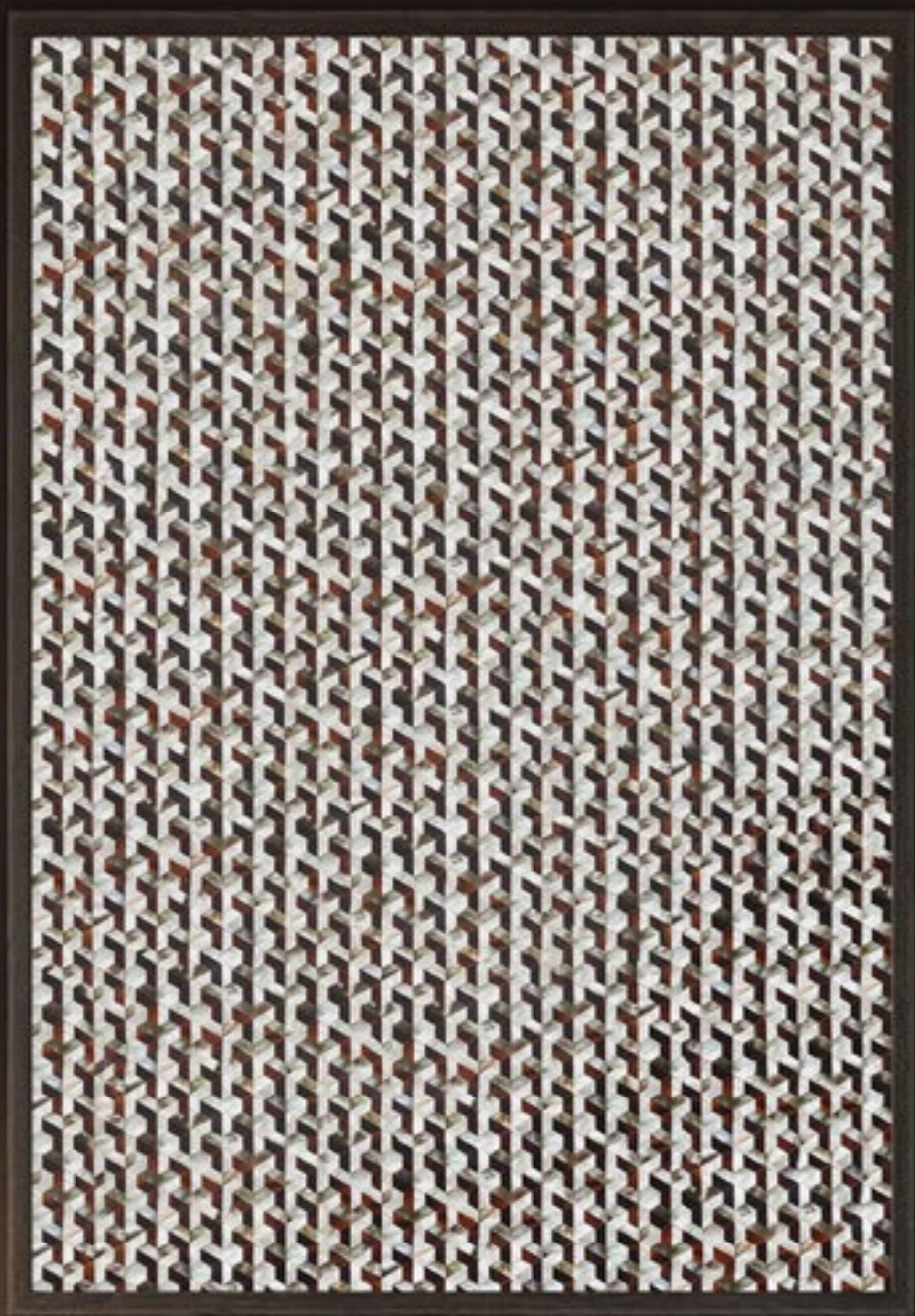
Colour ways



Emerald

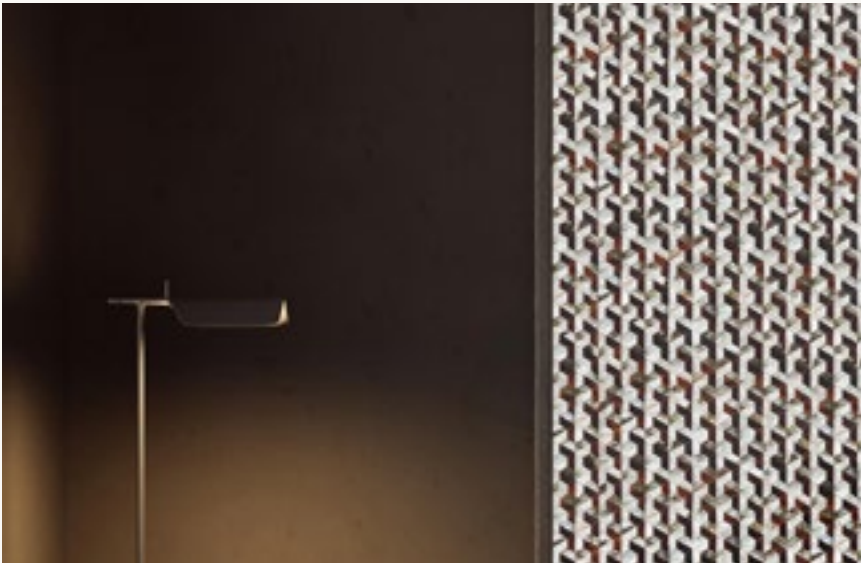
Technical Information

Base Material	Saltwater	Applications	Internal & External
Technical information	See page 160	Swimming Pools	No
Colour ways	1	Wet Areas	Yes
Pattern Match	Yes	Support	Aluminium / Magnesium Board / PVC Foam



Interlock

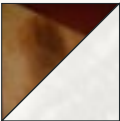
Siminetti’s interlock decorative surface will add a luxury, on trend, geometric touch to any interior or exterior design project. Intricate details & stunning colours are sure to create impact in the most luxurious of commercial or residential spaces.



Features

- Geometric Design
- Stunning colours
- Intricate details

Colour ways



Imperial

Technical Information

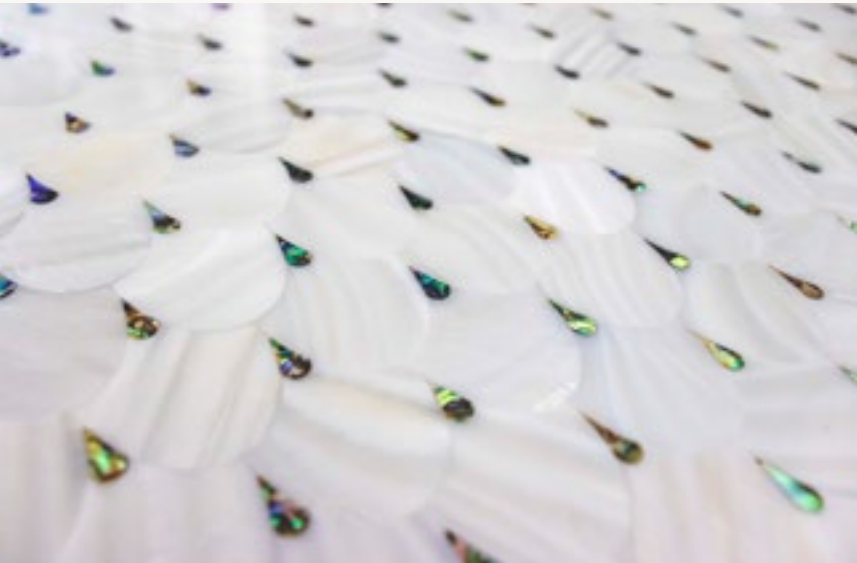
Base Material	Saltwater	Applications	Internal & External
Technical information	See page 160	Swimming Pools	No
Colour ways	1	Wet Areas	Yes
Pattern Match	Yes	Support	Aluminium / Magnesium Board / PVC Foam



ID
SBID
PRODUCT
DESIGN
AWARDS
2020
FINALIST

Pearl Drop

Pearl Drop uses Siminetti’s most exclusive Saltwater mother of pearls, which creates a distinctive, individual depth to each pearl drop. These are one of our most awe-inspiring designs. Our Golden Pearl Drop surface was a finalist in the renowned SBID Product Design awards 2020.



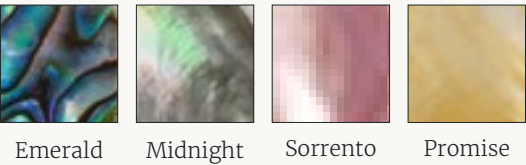
Features

Four stunning colour ways

Breathtaking intricate details

Elegant saltwater pearl drops

Colour ways



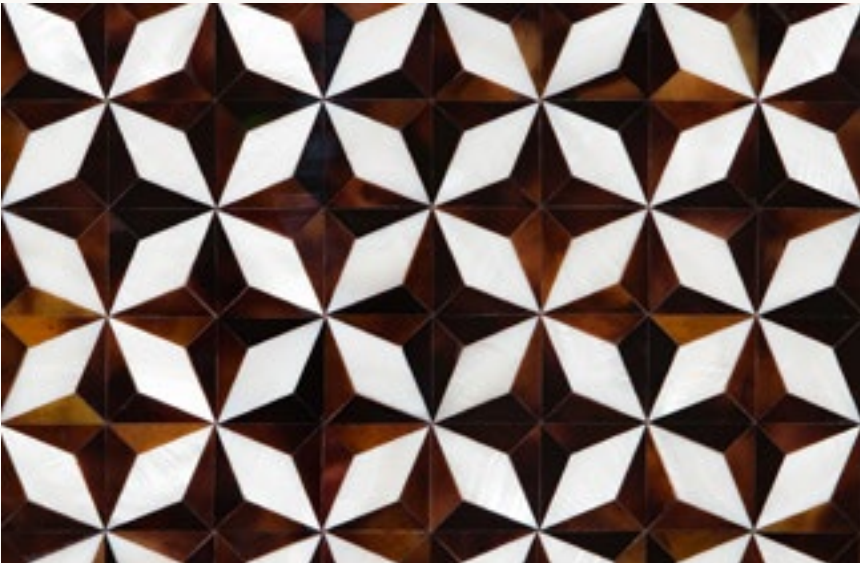
Technical Information

Base Material	Freshwater & Saltwater	Applications	Internal & External
Technical information	See page 160	Swimming Pools	No
Colour ways	4	Wet Areas	Yes
Pattern Match	Yes	Support	Aluminium / Magnesium Board / PVC Foam



Starlink

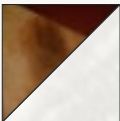
A perfect match of Saltwater Mother of Pearl Imperial mixed with Freshwater shell in Bianco. A decorative surface that is ideally suited as a feature wall adding drama and sophistication.



Features

- Saltwater & Freshwater Mother of Pearl
- Creates a stunning feature wall
- Adds drama & sophistication

Colour ways



Imperial

Technical Information

Base Material	Freshwater & Saltwater	Applications	Internal & External
Technical information	See page 160	Swimming Pools	No
Colour ways	1	Wet Areas	Yes
Pattern Match	Yes	Support	Aluminium / Magnesium Board / PVC Foam



Wave

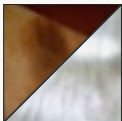
A unique design to Siminetti, utilising only the finest freshwater and saltwater Mother of Pearl ‘Wave’ harnesses nature’s most stunning material with ties back to the material’s origin in the oceans and rivers around the world.



Features

- Harmony of saltwater & freshwater pearl
- Contrasting colours add depth
- Ties back to the sea

Colour ways



Imperial

Technical Information

Base Material	Bianco Freshwater Pearl	Applications	Internal & External
Technical information	See page 160	Swimming Pools	No
Colour ways	1	Wet Areas	Yes
Pattern Match	Yes	Support	Aluminium / Magnesium Board / PVC Foam



Whisper

Unique to Siminetti, our range of Mother of Pearl Decorative Surfaces, offer a modern twist to a classic finish. Make your walls and flooring stand out with Whisper. Each shape beautifully cut by hand and sealed for optimum quality and strength.



Features

- Seemingly random pieces create an exciting finish
- Exclusive to Siminetti
- Sealed for use in wet areas
- Requires no grouting

Colour ways



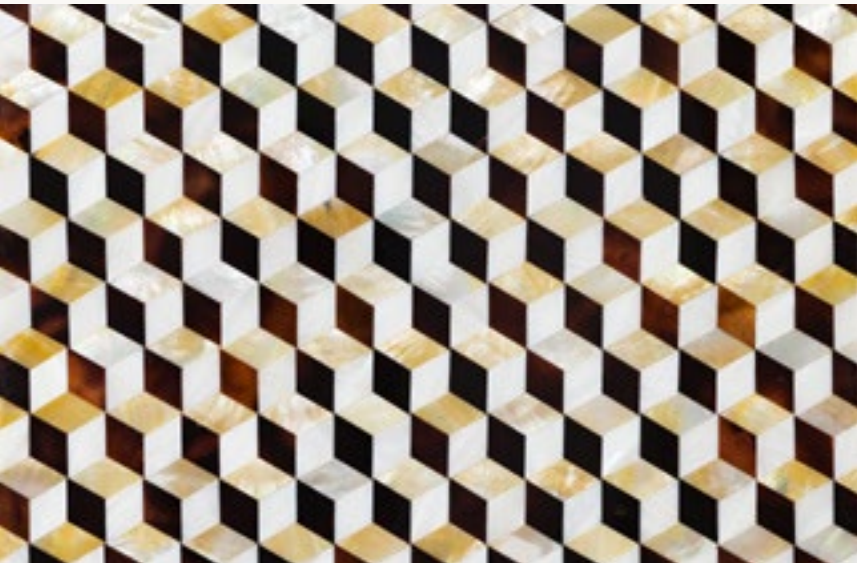
Technical Information

Base Material	Freshwater & Saltwater	Applications	Internal & External
Technical information	See page 160	Swimming Pools	No
Colour ways	5	Wet Areas	Yes
Pattern Match	Yes	Support	Aluminium / Magnesium Board / PVC Foam



3D Cube

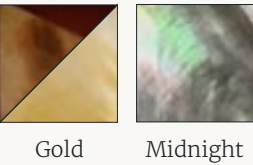
A true geometric experience. Make a statement with Siminetti’s 3D cube decorative surfaces. Popular in spas, swimming pools, wetrooms and for making statement feature walls. Available in two bold colour ways.



Features

- Unique geometric design
- Statement aesthetic
- Bold colours

Colour ways



Technical Information

Base Material	Freshwater & Saltwater	Applications	Internal & External
Technical information	See page 160	Swimming Pools	No
Colour ways	2	Wet Areas	Yes
Pattern Match	Yes	Support	Aluminium / Magnesium Board / PVC Foam

Seasons × Chrisanna

An exclusive collaboration between Siminetti &
renowned surface designer Chrisanna Mcarther.

Taking inspiration from each of the seasons
Chrisanna created 12 stunning designs all produced
in our luxury Mother of Pearl.



Natures Herringbone

Plant veins are brimming with life. The undivided blade of a leaf encompasses structural patterns creating ordered geometric impressions. Natures Herringbone picks up these irregularities and organises them into straight parallels.



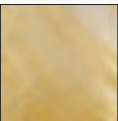
Features

Structural geometric pattern

Inspired by the veining of delicate spring leaves

Available with either Golden Promise or Innocence detailing

Colour ways



Promise



Innocence

Technical Information

Base Material	Bianco Freshwater Pearl	Applications	Internal & External
Technical information	See page 160	Swimming Pools	No
Colour ways	2	Wet Areas	Yes
Pattern Match	Yes	Support	Aluminium / Magnesium Board / PVC Foam



Foxglove

Early Spring is the catalyst for a vast array of wild flowers. Often found on woody hillsides and ornamental in its detail, Foxglove is a natural fit to bring an ingredient of the dreamy woodland habitat into the home and interior space.



Features

- Woodland inspired design
- Calming soft colours
- Intricate repeat pattern

Colour ways



Technical Information

Base Material	Bianco Freshwater Pearl	Applications	Internal & External
Technical information	See page 160	Swimming Pools	No
Colour ways	2	Wet Areas	Yes
Pattern Match	Yes	Support	Aluminium / Magnesium Board / PVC Foam



Petal

Spring sun encourages flowers to bloom. The repetition in Petal exhibits continual movement and change. It supports the abundance of plant life, particularly in freshness at the beginning of a new period of flowering.



Features

Inspired by delicate spring petals

Available in 2 stunning colour ways

Colour ways



Promise Innocence

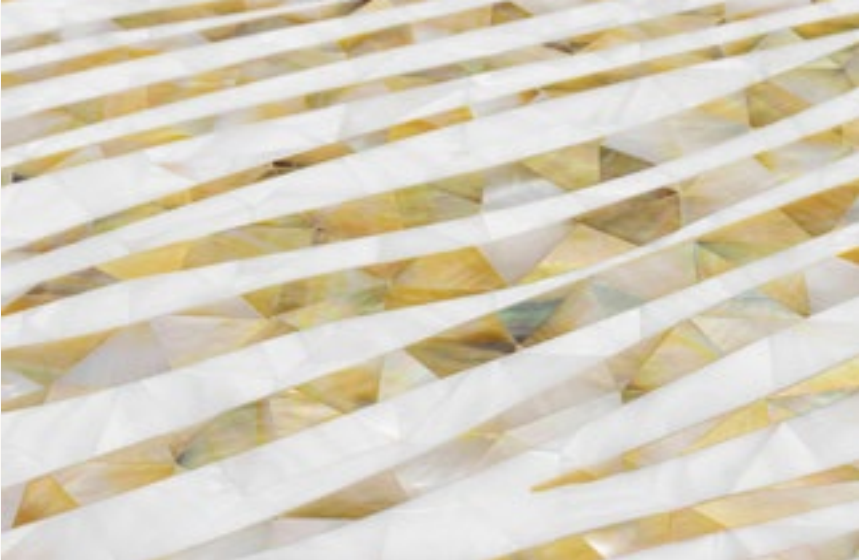
Technical Information

Base Material	Bianco Freshwater Pearl	Applications	Internal & External
Technical information	See page 160	Swimming Pools	No
Colour ways	2	Wet Areas	Yes
Pattern Match	Yes	Support	Aluminium / Magnesium Board / PVC Foam



Ocean's Edge

Water laps and sparkles up at land's fringes, gently making soft wrinkles and ridges. Left behind only momentarily, Ocean's Edge captures this nostalgic Summer moment before the next waves crashes in.

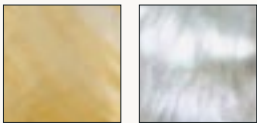


Features

Organic Lines

Inspired by the Ocean

Colour ways



Promise

Innocence

Technical Information

Base Material	Bianco Freshwater Pearl	Applications	Internal & External
Technical information	See page 160	Swimming Pools	No
Colour ways	2	Wet Areas	Yes
Pattern Match	Yes	Support	Aluminium / Magnesium Board / PVC Foam



Eucalyptus

The bright Summer sun casts warm shadows creating silhouettes of leaves and foliage. Eucalyptus preserves the contrast of light from this familiar mid summer bloom.



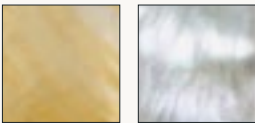
Features

Warming shadows

Organic repeat pattern

Reminiscent of Summer

Colour ways



Promise Innocence

Technical Information

Base Material	Bianco Freshwater Pearl	Applications	Internal & External
Technical information	See page 160	Swimming Pools	No
Colour ways	2	Wet Areas	Yes
Pattern Match	Yes	Support	Aluminium / Magnesium Board / PVC Foam



Seashell

Precious treasures telling tales of the sea are washed up onto beaches. This honest linear shaped pattern reflects the traveling waves. Seashell with its lines perpendicular to the growing edge reflects the expanse and calm of the water.



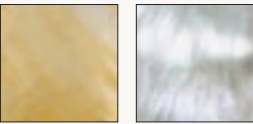
Features

Geometric repeat patterns

Inspired by seashells on the beach

Calming effect

Colour ways



Promise Innocence

Technical Information

Base Material	Bianco Freshwater Pearl	Applications	Internal & External
Technical information	See page 160	Swimming Pools	No
Colour ways	2	Wet Areas	Yes
Pattern Match	Yes	Support	Aluminium / Magnesium Board / PVC Foam



Impel

As the seasons begin to cool and change the rain leaves patterns in soft undulating folds as it falls. Impel is inspired by the waves that ripple through the water in concentric circles with each new raindrop.



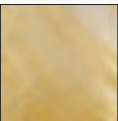
Features

Ripples of water

Relaxing effect

Ideal for spas & Hotels

Colour ways



Promise



Innocence

Technical Information

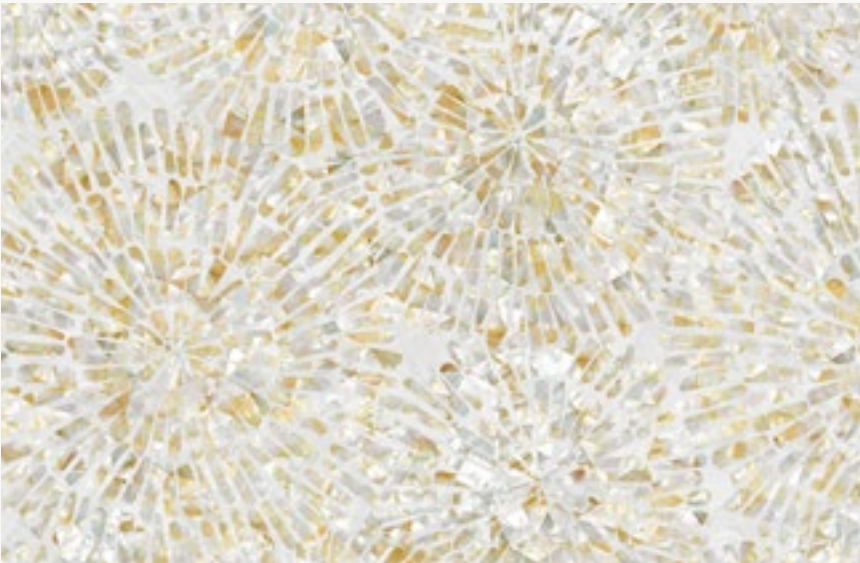
Base Material	Bianco Freshwater Pearl
Technical information	See page 160
Colour ways	2
Pattern Match	Yes

Applications	Internal & External
Swimming Pools	No
Wet Areas	Yes
Support	Aluminium / Magnesium Board / PVC Foam



Encircle

Each ring of a tree marks the completion of a turn at all the seasons, attributing it to a specific time and place. Encircle combines individual mark-making and unique shapes defining its own particular story.



Features

Inspired by the inner circles of a tree trunk

Marks the turn of each season

Colour ways



Promise Innocence

Technical Information

Base Material	Bianco Freshwater Pearl	Applications	Internal & External
Technical information	See page 160	Swimming Pools	No
Colour ways	2	Wet Areas	Yes
Pattern Match	Yes	Support	Aluminium / Magnesium Board / PVC Foam



Silver Birch

Its papery silver and white bark gently flakes away from the fissured trunk of the familiar woodland tree. Silver Birch collates the elements that are newly exposed as the surface peels and breaks forming decorative motifs.



Features

Texture inspired by the bark of silver birch

The dark lines of silver birch develop with age

Striking design

Colour ways



Technical Information

Base Material	Bianco Freshwater Pearl	Applications	Internal & External
Technical information	See page 160	Swimming Pools	No
Colour ways	2	Wet Areas	Yes
Pattern Match	Yes	Support	Aluminium / Magnesium Board / PVC Foam



Crystal

Beautiful hexagonal patterns are often seen in frosty environments as freezing water turns to ice. These charming lucent shapes inspired the creation of Crystal.

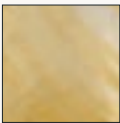


Features

Natural pattern of freezing ice

A true first for mother of pearl surfaces

Colour ways



Promise



Innocence

Technical Information

Base Material	Bianco Freshwater Pearl	Applications	Internal & External
Technical information	See page 160	Swimming Pools	No
Colour ways	2	Wet Areas	Yes
Pattern Match	Yes	Support	Aluminium / Magnesium Board / PVC Foam



Cascade

As freezing water expands the effect can be quite dramatic, often creating controlled but alluring structures in pattern. Cascade celebrates this with cheerful fan shaped motifs.

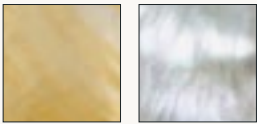


Features

Fan shaped motifs

Intricate design with stunning details

Colour ways



Promise

Innocence

Technical Information

Base Material	Bianco Freshwater Pearl	Applications	Internal & External
Technical information	See page 160	Swimming Pools	No
Colour ways	2	Wet Areas	Yes
Pattern Match	Yes	Support	Aluminium / Magnesium Board / PVC Foam



Effervescent

Bubbling air rises slowly upwards from underneath icy surfaces forming chance configurations. Effervescent represents the interacting collection of each delicate form and contour.



Features

- A playful take on decorative surfaces
- Delicate repeating spheric shapes

Colour ways



Promise



Innocence

Technical Information

Base Material	Bianco Freshwater Pearl	Applications	Internal & External
Technical information	See page 160	Swimming Pools	No
Colour ways	2	Wet Areas	Yes
Pattern Match	Yes	Support	Aluminium / Magnesium Board / PVC Foam

In Residence

Combining the artistry of our luxury Mother of Pearl, with the craftsmanship of European furniture artisans, our In-Residence collection of fine and contemporary furniture captures the very best nature has to offer.

Sticking to our roots of combining beauty with sustainability the In-Residence collection offers both private and commercial spaces defining luxury furniture.



Ariel

Features Siminetti Mother of Pearl inset into a crafted wooden frame. Seat cushioned in high density foam, lined with the chosen fabric. Fabric to be supplied by client.



Features

Contemporary Styling

Wrap around mother of pearl inlay

Deep foam cushioning for superior comfort

Colour ways



Technical Information

Base Material	Wooden Frame	Styles	1
Pearl	Freshwater & Saltwater	Applications	Internal
Technical information	Contact Representative	Wet Areas	No
Colour ways	5	Dimensions (CM)	120 (W) x 70 (D) x 56 (H)



Cordella

Features Siminetti Mother of Pearl shelves inset into solid wood with brass finishes. Glass panels to the front, side and back. Bespoke wood finishes available.



Features

Geometric abstract shaping

Unique see through display cabinet

Made bespoke to order by expert crafts people

Colour ways



Technical Information

Base Material	Wooden Frame	Styles	1
Pearl	Freshwater & Saltwater	Applications	Internal
Technical information	Contact Representative	Wet Areas	No
Colour ways	5	Dimensions (CM)	130 (W) x 43 (D) x 185 (H)



Juliet

Features Siminetti Mother of Pearl inset into Capitone, with a Wenge wood baseboard. Padded and stitched with chosen fabric.



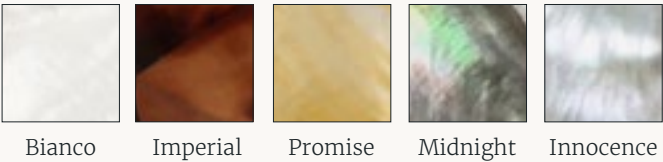
Features

Distinctive piece without comparators

High level of cushioning for great comfort

Option to specify any desired fabric

Colour ways



Technical Information

Base Material	Wenge Wooden Frame	Styles	1
Pearl	Freshwater & Saltwater	Applications	Internal
Technical information	Contact Representative	Wet Areas	No
Colour ways	5	Dimensions (CM)	156 (W) x 116 (D) x 34 (H)



Orphelia

Features Siminetti Mother of Pearl inset into a crafted wood frame, wrapped in chosen fabric. Feet finished in solid ash.



Features

Statement chaise longue suited to bedrooms & hallways

Luxurious mother of pearl edging detail

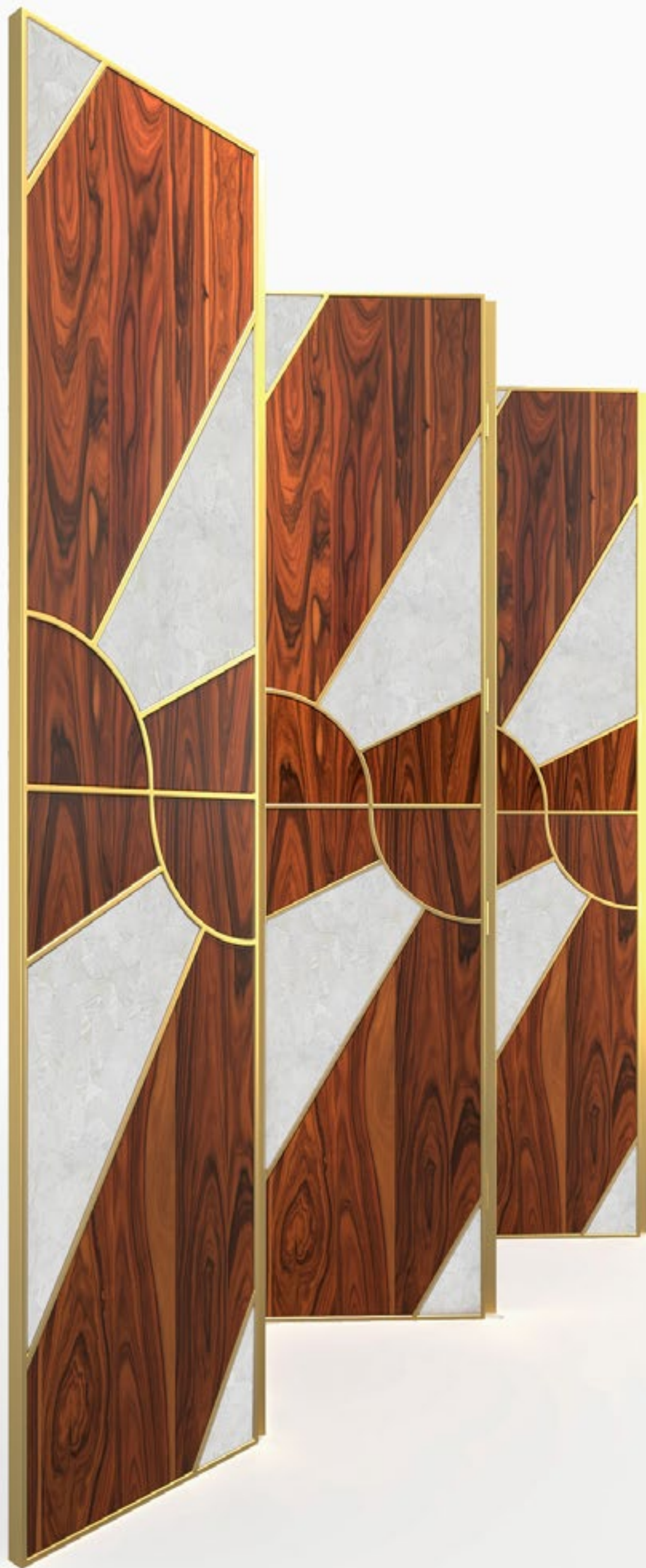
Minimalistic ash feet

Colour ways



Technical Information

Base Material	Wooden Frame	Styles	1
Pearl	Freshwater & Saltwater	Applications	Internal
Technical information	Contact Representative	Wet Areas	No
Colour ways	5	Dimensions (CM)	68 (W) x 143 (D) x 97 (H)



Othello

Features Siminetti Mother of Pearl inset into six Ironwood panels crafted with brass inlays and supporting hinges.



Features

- Stunning wood grains and mother of pearl texture
- Statement dividing screen
- Premium Brass fittings

Colour ways



Technical Information

Base Material	Ironwood Frame	Styles	1
Pearl	Freshwater & Saltwater	Applications	Internal
Technical information	Contact Representative	Wet Areas	No
Colour ways	5	Dimensions (CM)	270 (W) x 180 (H)



Portia Coffee Table

Features Siminetti Mother of Pearl inset into a handcrafted geometric brass frame. Expertly bent lengths of brass envelopes striking mother of pearl panels to create a jewel-like item of furniture.



Features

- Statement brass framework with jewelling mother of pearl
- Geometric contemporary styling
- vast number of configurations

Colour ways



Technical Information

Base Material	Ironwood Frame	Styles	4 sizes available
Pearl	Freshwater & Saltwater	Applications	Internal
Technical information	Contact Representative	Wet Areas	No
Colour ways	5	Dimensions (CM)	190 x 77 / 130 x 38 / 110 x 43 / 52 x 48



Prospero Chair & Footstall

Features Siminetti Mother of Pearl inset into Australian wood leaf with a high gloss finish. Seat, back and footstool cushioned with high density foam, lined with chosen fabric.



Features

Contemporary shape utilising traditional materials

Made using Australian wood leaf

Cushioned with high density foam

Colour ways



Technical Information

Base Material	Australian Wood Leaf
Pearl	Freshwater & Saltwater
Technical information	Contact Representative
Colour ways	5

Styles	2
Applications	Internal
Wet Areas	No
Dimensions (CM)	87 (W) x 97 (D) x 89 (H) / 87 x 75 x 56



Romeo

Features Siminetti Mother of Pearl inset into a Walnut wood with a matt finish. Brass door fittings and drawers upholstered in leather.



Features

Solid Walnut construction

Matt Finish

Brass door fittings

Colour ways



Technical Information

Base Material	Walnut
Pearl	Freshwater & Saltwater
Technical information	Contact Representative
Colour ways	5

Styles	2
Applications	Internal
Wet Areas	No
Dimensions (CM)	140 / 190 (W) x 55 (D) x 80 (H)



Rosalind

Features Siminetti Mother of Pearl inset into the top of a Walnut wood table. Finished in gloss with a secondary magazine shelf.



Features

Mother of Pearl inset into walnut frame

Secondary centre shelf

Deep Gloss finish

Colour ways



Technical Information

Base Material	Walnut	Styles	2
Pearl	Freshwater & Saltwater	Applications	Internal
Technical information	Contact Representative	Wet Areas	No
Colour ways	5	Dimensions (CM)	150 (W) x 45 (D) x 80 (H)

Additional

We hope that the contents of this brochure has provided all the information required. However In the event additional information is needed or you would like to place an order please get in contact.



Bespoke Design

1. Get In Touch.

Upon looking through our collections, please get in touch with us where one of our team will discuss your requirements & find the product or products which are right for you. Once a selection has been narrowed down samples can then be sent out to show the exquisite details of our Mother of Pearl.



3. Our Expert Artisans Hand Craft Your Design.

The finalised design will then be expertly crafted by hand. Our team of artisans use precise tolerances to ensure the resulting product is an exact fit for your space. When producing mosaic tiles each tesserae is cut, polished, resin sealed and then placed by hand onto either paper sheets or a mesh support. Our Decorative surfaces are produced by first cutting the tesserae, placing them by hand onto our unique honeycomb aluminium support, then sealing the entire panel before sanding to a smooth finish & final seal.





2. We Develop Your Unique Design

The next stage involves the development of your unique design. Utilising our teams unrivalled knowledge of Mother of Pearl we can discuss colour schemes, applications & styling to develop a solution that is not only stunning but functional. It is at this stage we will incorporate any cut-outs or finishing options that are needed. The finalised design can be visualised in 3D by our render partners if required.

4. We Send Out Your Finished Design.

The Mosaic Tiles or Feature Wall Panels are then quality checked and protectively packaged before being sent to you. Installation of all our mother of pearl is straight forward & our team can guide you through the process for either self installation (Our decorative surfaces are really that easy to install!) or installation by professionals.

Gallery – Residential



Natural Hexagons Mosaic – Private Client UK



Crystal Kitchen splashback – USA



Innocence 25mm Swimming pool tiles – Private Client USA



Midnight Pearl Shower – Private Client UK

Gallery – Residential



Golden Pearl Drop Decorative Panel – Kitchen Splashback USA



Midnight Pearl Whisper – Private Client



Gentle Earth Hexagons – Netherlands



Midnight Pearl 25mm Shower & feature inlay – USA

Gallery – Pool & Spa



Gentle Earth 25mm – Langley Park Hotel & Spa – Buckinghamshire (UK)



Midnight Pearl 25mm – Away Spa / W Hotel – Dubai (UAE)



Bianco & Midnight Pearl 25mm - Drom Spa Lounger - UK



Bianco & Midnight Pearl 25mm - Ocean Drive Miami

Gallery – Pool & Spa



Gentle Earth Hexagons – Zula Destination Spa – Doha Qatar



Bianco Herringbone – Tampa Private Pool



Innocence 25mm – Californian Swimming Pool



Biscotti 25mm – Southbank Place Spa – London UK

Gallery – Hospitality



Harmonie Natural 20mm– Jimmy Choo – London UK



Midnight Pearl 25mm – Pi Hotel



Dove Grey 25mm - Le Monde Hotel - Scotland (UK)



Natural Harmonie 20mm - The LaLit - London (UK)

Gallery – Hospitality



Innocence Whisper – Hotel Foyer – London UK



Bianco Hexagons – The Bristol Hotel – Virginia USA



Encircle – Hotel Foyer – London UK



Bianco Hexagons – The Burj Khalifa – Dubai

Gallery – Marine



Bianco 20mm – Princess Yachts – Plymouth UK



Bespoke table inlay – Princess Yachts UK



Bianco Hexagons – Fairline Yachts



Crackle Feature Wall Panel – Aquamare Marine (UK) for a Client in Hong Kong

Gallery – Aviation



Imperial Whisper – Santa Fe, USA – RWR Design



Gemstone Bar – Private USA – RWR Design



Innocence Crystal – Private aircraft – UK



Satrlink Table – Private Aircraft – RWR Design

Mosaics Installation

SIMINETTI MOTHER OF PEARL MOSAIC SAFETY, INSTALLATION AND AFTER-CARE GUIDE

The details are guidance only and are given to ensure the beauty of your Mother of Pearl mosaic is maintained for many years to come. The information herein is a guide and is not exhaustive.

1) Application of the Mosaics

One of the great strengths of the mosaics is that they are an extremely strong mosaic given their relative thickness. This strength is achieved through the natural material. This allows for the mosaics to be used in many areas, including Walls, Floors, Swimming Pools, Showers, Wet-Rooms, Spa's etc. (Some colours are not suitable for Swimming Pools or external use, consult your supplier for full details).

1a) Installation

When installing the mosaics we recommend you choose a recognised installer who has experience in the installation of mosaics. Mosaics are not difficult to install but they require more surface preparation than would normally be used for larger tiles.

We recommend the use of a Mosaic Adhesive in all cases. Preferably a white adhesive should be used as this ensure the colour of the mosaics is not effected by the colour of the background adhesive. Darker adhesives may adjust the tonal colour of the mosaics once installed.

The type of mosaic adhesive used will depend on the substrate onto which the mosaics are being installed. Consult your installer for the correct material type to be used. Siminetti recommend Kerakoll Adhesives are used with its products but other manufacturers products maybe suitable.

Mesh backed sheets. The individual tesserae are fixed onto a fibre mesh support which is placed into the tile adhesive applied to the substrate on which the mosaics are to be mounted. It is recommended that a maximum trowel notch depth of 2mm is used to ensure that the adhesive does not squeeze through the grout joints when the sheets are applied to the adhesive. Due to the minimal weight of each sheet, it is recommended that minimal pressure be applied when fixing the sheets to the adhesive to prevent possible squeezing through of the adhesive.

Paper faced sheets. The individual tesserae are fixed onto a paper sheet. The paper sheet should **NOT** be fixed into the adhesive and should be facing away from the substrate on to which the mosaics are to be installed. The tesserae showing on the reverse of the sheet should be placed into the adhesive previously applied to the substrate onto which the mosaics are being installed. It is recommended that a maximum trowel notch depth of 2mm is used to ensure that the adhesive does not squeeze through the grout joints when the sheets are applied to the adhesive. Due to the minimal weight of each sheet, it is recommended that minimal pressure be applied when fixing the sheets to the adhesive to prevent possible squeezing through of the adhesive.

Once the adhesive has cured, the paper can be removed by applying water to its surface. The water should be applied sparingly and allowed a little time to soak into the paper after which the water soluble glue binding the paper to the mosaics will be diluted and the paper can be peeled away. If the paper does not peel away easily re-apply water or wait for a longer period for the water to be fully absorbed by the glue. Caution:- If the adhesive securing the mosaics to the substrate has not fully cured, then the individual tesserae may come away from the substrate when the paper is removed.

1b) Cutting the Mosaics

On occasion it may be necessary to cut the mosaics to ensure a correct fitting. The mosaics can be easily cut with a diamond disc using a wet or dry process. The mosaics are not prone to splintering or shattering, however as with any mechanical process we recommend the wearing of a dust mask along with safety eye and hand wear are used at all times during the cutting process.

As the mosaics are produced from a natural process, there may be dust and a slight odour given off during any cutting process. It is recommended that any cutting is carried out in a well ventilated area.

1c) Grouting

Siminetti recommends KERAKOLL ECO Fugabella or Fugalite Grout is used with its products. Kerakoll Eco Fugabella Grout is a cementitious grout with a very fine granular content resulting in a smooth grout finish. Fugalite epoxy grouts may also be used with Siminetti products. Other manufacturers grouts may be suitable and should be clarified with your installer prior to application.

Grouts can be applied in the recommended industry fashion. The grout will not penetrate the mosaics however care should be taken when applying the grout to not use mechanical products which may damage the surface of the mosaics. Rubber trowels and sponges are recommended tools.

1d) Removal of Installation Residue

DO NOT USE acids or similar strength materials as this may break-down the surface of the Mother-of-Pearl or Shell resulting in porosity or a reduction in the polished effect. If using a grout cleaning agent, test an area of the mosaics to ensure it does not damage the mosaics.

2) Aftercare & Cleaning

A soft cloth with warm water should easily clean off the mosaics. DO NOT USE acids or similar strength materials as this may break-down the bond resulting in porosity or a reduction in the polished effect. If unsure about the strength of a cleaning agent, we recommend trialling it on a small area in the first instance.

Notes

Siminetti products are produced from 100% natural products and as such samples colour may differ from actual supplied product colours due to the natural production process of Mother of Pearl and/or Shell product. Dyed colours are not suitable for external use or areas prone to excessive sunlight. Products used externally may show some signs of natural fading when exposed to direct sunlight.

IF IN DOUBT WE RECOMMEND CONSULTING YOUR SUPPLIER or e-mail SALES@SIMINETTI.COM

This document is issued as guidance only and does not constitute any binding agreement to Siminetti Ltd or its Associates, Partners or Providers associated with Siminetti Ltd. Installation of Siminetti Ltd products is the sole responsibility of the purchasers and Siminetti does not accept any liability whatsoever for incorrect installation or application of its products. Siminetti Ltd will not accept any liability unless the purpose and application type have been agreed upon in writing with Siminetti Ltd. Observe the procedures indicated in this document at all times.

Feature Wall Panels

SIMINETTI MOTHER OF PEARL FEATURE WALL PANELS SAFETY, INSTALLATION & AFTER CARE

The following details are given as guidance only and to ensure the beauty of your Mother of Pearl Feature Wall Panel(s) is maintained for many years to come. The information herein is a guide and is not exhaustive.

1) Application of the Feature Wall Panels

One of the great strengths of the Feature Wall Panels is that they are extremely strong, water proof and lightweight given their relative thickness. This strength and minimal weight is achieved through the use of an Aluminium Honeycomb backing onto which the Mother of Pearl is fixed. This allows for the Feature Wall Panels to be used in many areas, including Walls, Showers, Wet-Rooms, Spa's, Furnishings etc. Siminetti Feature Wall Panels are also suitable for Kitchen Back splashes. The Feature Wall Panels are NOT recommended for floor areas due to the surface area being highly polished and this may create a slip surface.

1a) Installation

When installing the Feature Wall Panels we recommend you choose a recognised installer who has experience in the installation of panels or large format products. Siminetti Feature Wall Panels are not difficult to install but it is important that the surface onto which they are to be installed is suitable and stable.

We recommend the use of a Tile Adhesive or strong Gel Adhesive in all cases. In all cases the adhesive should be suitable for adhesion to aluminium and the surface on which the panel is to be placed. Due to the nature of the panels, the colour of the adhesive used will not effect the surface finish and thus all colours are acceptable.

The type of adhesive used will depend on the substrate onto which the panels are being installed. Consult your installer for the correct adhesive to be used. Siminetti recommend Kerakoll Adhesives are used with its products but other manufacturers products maybe suitable.

When applying the adhesive, we recommend applying the adhesive to the aluminium surface on the rear of the panel and then placing the panel up against the surface to which it is to be placed. With the panels being light in weight only a thin layer of adhesive is generally required but this actually quantity will depend on the adhesive being used and the manufacturers instructions should be followed in all cases. To achieve the most secure fixing it is recommended that adhesive is applied to the full aluminium rear surface.

1b) Cutting Siminetti Feature Wall Panels

On occasion it maybe necessary to cut the panels to ensure a correct fitting or installation of other services, pipe-works, mirrors etc. The panels can be easily cut or drilled with diamond tipped cutting tools using a wet or dry process. The panels are not prone to splintering or shattering, however as with any mechanical process we recommend the wearing of a dust mask along with safety eye and hand wear are used at all times during the cutting process. As the panels are produced using natural Mother of Pearl, there maybe dust and a slight odour given off during any cutting process. It is recommend that any cutting is carried out in a well ventilated area.

1c) Jointing / Finishing of Siminetti Feature Wall Panels

When installing Siminetti Feature Wall Panels, it is recommended that panel edge and jointing trims are used to achieve the ultimate finished effect. However the client is free to choose the manner in which any joints or exposed edges are finished once the panel(s) are installed. Finishing options include, sealant, grouts or recommended panel edge trims. If using grouts or sealants, it is recommended that the colour chosen compliments the colour of the Mother of Pearl Decoration. Siminetti Feature Wall Panels are 8mm thick (unless otherwise specified), 6mm Aluminium Honeycomb and 2mm Mother of Pearl. To complete the installation of the panels, tile panel edge trims can be used to close off the ends or to join two panels across a larger surface area. Siminetti recommend the use of Genesis Panel trims but other manufacturers products are available. When finishing with panels in a wet environments, ie. Showers, it is recommended that a clear silicon is placed along the edge to be fitted with a trim to ensure a water tight joint. Siminetti Decorative Panels do not require secondary sealing for use in Wet Areas or External Areas.

1d) Removal of Installation Residues

DO NOT USE acids or similar strength materials as this may break-down the surface of the Mother-of-Pearl or Shell resulting in porosity or a reduction in the polished effect. If using adhesive or grout cleaning agents, ALWAYS test an area of the panels to ensure no damage has occurred.

2) Cleaning and Aftercare Instructions

A soft cloth with warm water should easily clean off your Feature Wall Panel(s). DO NOT USE acids or similar strength materials as this may break-down the bond resulting in porosity or a reduction in the polished effect. If unsure about the strength of a cleaning agent, we recommend trialling it on a small area in the first instance.

Notes

Siminetti Feature Wall Panels are produced from an Aluminium Honeycomb which consists of 2 layers of aluminium sheet separated by an aluminium honeycomb grid. The Mother of Pearl Feature Wall Panels are produced from 100% natural products and as such sample colours may differ from actual supplied product colours due to the natural production process of Mother-of-Pearl and/or Shell product. Dyed colours are not used within the production of Siminetti Decorative Panels. Products suitable for external use may show signs of natural weathering dependent upon the climatic conditions in which they are installed. All products suitable for external use are frost proof to BS EN ISO 10545-12 certification.

IF IN DOUBT WE RECOMMEND CONSULTING YOUR SUPPLIER or e-mail SALES@SIMINETTI.COM

This document is issued as guidance only and does not constitute any binding agreement to Siminetti Ltd or its Associates, Partners or Providers associated with Siminetti Ltd. Installation of Siminetti Ltd products is the sole responsibility of the purchasers and Siminetti does not accept any liability whatsoever for incorrect installation or application of its products. Siminetti Ltd will not accept any liability unless the purpose and application type have been agreed upon in writing with Siminetti Ltd. Observe the procedures indicated in this document at all times.

Mosaic Technical Specifications

	Mosaic style	Colours	Tesserae Size*	Sheet Size*	Tesserae per sheet	Sheets per Metre ²	Thickness*	Weight per Metre ²
	25mm	16	25 x 25	318 x 318	144	10	2	4.16 kg
	15mm	19	15 x 15	316 x 316	361	10	2	4.16 kg
	Brick	9	30 x 15	305 x 305	162	11	2	4.16 kg
	Herringbone	8	30 x 15	300 x 275	156	12	2	4.16 kg
	Circles	8	25 x 25	320 x320	143	11	2	4.16 kg
	Ovals	8	32 x 18	305 x 285	162	12	2	4.16 kg
	Cubes	5	40 x 22	300 x 250	108	15	2	4.16 kg
	Hexagon	8	25 x 25	310 x 310	143	11	2	4.16 kg
	Fantail	8	25 x 25	305 x 285	220	11	2	4.16 kg
	Multi Square	5	10 to 30mm	320 x 320	176	10	2	4.16 kg
	Harmonie 10	19	10 x 10	300 x 300	900	11	2	4.16 kg
	Harmonie 20	16	20 x 20	300 x 300	225	11	2	4.16 kg

*Dimensions are approximate due to the natural qualities of Mother of Pearl.

All Mosaics achieve
BS EN ISO 10545-03
BS EN ISO 10545-09
BS EN ISO 10545-12
BS EN ISO 10545-13

Mosaic colour	Page	Styles	Base Material	Grout	Applications (Always ask)	Swimming Pools (Always ask)	Wet Areas (Always ask)
Anthracite	10	12	Freshwater	Anthracite	Internal	No	Yes
Antique Brass	12	4	Freshwater	Brown	Internal	No	Yes
Bianco	14	12	Freshwater	White	Internal & External	Yes	Yes
Biscotti	16	5	Freshwater	White	Internal & External	No	Yes
Blush	18	4	Freshwater	Silver	Internal	No	Yes
Bronze	20	4	Freshwater	Caramel	Internal	No	Yes
Copper	22	4	Freshwater	Terracotta	Internal	No	Yes
Dove Grey	24	12	Freshwater	Dove Grey	Internal	No	Yes
Emerald Gold	26	4	Freshwater	Caramel	Internal	No	Yes
Gentle Earth	28	12	Freshwater	Walnut	Internal	No	Yes
Natural	30	12	Freshwater	White	Internal & External	Yes	Yes
Ocean Calm	32	4	Freshwater	White	Internal	No	Yes
Jade	34	4	Freshwater	Moss	Internal	No	Yes
Summers Day	36	4	Freshwater	Yellow	Internal	No	Yes
Golden Promise	38	10	Saltwater	Silver	Internal & External	Yes	Yes
Innocence	40	8	Saltwater	Silver	Internal & External	Yes	Yes
Midnight Pearl	42	10	Saltwater	Silver	Internal & External	Yes	Yes
Seduction	44	2	Saltwater	Invisible	Internal & External	No	Yes
Tranquillity	46	2	Saltwater	Beige	Internal & External	No	Yes
Bologna	48	2	Freshwater	Beige	Internal	No	Yes
Napoli	50	2	Freshwater & Saltwater	Neutral	Internal	No	Yes
Sorrento	52	2	Freshwater	Neutral	Internal	No	Yes
Venecia	54	2	Freshwater	Neutral	Internal	No	Yes

Feature Wall Panels Specifications

Style	Collection	Page	Base Material	Dimensions (Max)	Colour ways	Pattern Match	Substrate	Substrate Thickness	Weight per m2	Applications
20mm	Classic	58	Freshwater or Saltwater	120cm x 240cm	5	Yes	Aluminium/ Magnesium Board/ PVC Foam	4mm to 28mm	5 kg	Internal & External
Constantine	Classic	60	Freshwater or Saltwater	120cm x 240cm	5	Yes	Aluminium/ Magnesium Board/ PVC Foam	4mm to 28mm	5 kg	Internal & External
Hexagons	Classic	62	Freshwater or Saltwater	120cm x 240cm	5	Yes	Aluminium/ Magnesium Board/ PVC Foam	4mm to 28mm	5 kg	Internal & External
Chique Basket Weave	Textures	64	Bianco Freshwater Pearl	120cm x 240cm	1	Yes	Aluminium/ Magnesium Board/ PVC Foam	4mm to 28mm	5 kg	Internal & External
Chique Brick	Textures	66	Bianco Freshwater Pearl	120cm x 240cm	1	Yes	Aluminium/ Magnesium Board/ PVC Foam	4mm to 28mm	5 kg	Internal & External
Chique Fabric	Textures	68	Bianco Freshwater Pearl	120cm x 240cm	1	Yes	Aluminium/ Magnesium Board/ PVC Foam	4mm to 28mm	5 kg	Internal & External
Chique Herringbone	Textures	70	Bianco Freshwater Pearl	120cm x 240cm	1	Yes	Aluminium/ Magnesium Board/ PVC Foam	4mm to 28mm	5 kg	Internal & External
Chique Parallel	Textures	72	Bianco Freshwater Pearl	120cm x 240cm	1	Yes	Aluminium/ Magnesium Board/ PVC Foam	4mm to 28mm	5 kg	Internal & External
Pavimento Brick	Textures	74	Bianco Freshwater Pearl	120cm x 240cm	1	Yes	Aluminium/ Magnesium Board/ PVC Foam	4mm to 28mm	5 kg	Internal & External
Pavimento Cube	Textures	76	Bianco Freshwater Pearl	120cm x 240cm	1	Yes	Aluminium/ Magnesium Board/ PVC Foam	4mm to 28mm	5 kg	Internal & External
Arabesque Dream	Signatures	78	Freshwater & Saltwater	120cm x 240cm	2	Yes	Aluminium/ Magnesium Board/ PVC Foam	4mm to 28mm	5 kg	Internal & External
Crackle	Signatures	80	Saltwater	120cm x 240cm	1	No	Aluminium/ Magnesium Board/ PVC Foam	4mm to 28mm	5 kg	Internal & External
Gemstone	Signatures	82	Saltwater	120cm x 240cm	1	Yes	Aluminium/ Magnesium Board/ PVC Foam	4mm to 28mm	5 kg	Internal & External
Interlock	Signatures	84	Saltwater	120cm x 240cm	1	Yes	Aluminium/ Magnesium Board/ PVC Foam	4mm to 28mm	5 kg	Internal & External
Pearl Drop	Signatures	86	Freshwater & Saltwater	120cm x 240cm	4	Yes	Aluminium/ Magnesium Board/ PVC Foam	4mm to 28mm	5 kg	Internal & External
Starlink	Signatures	88	Bianco Freshwater Pearl	120cm x 240cm	1	Yes	Aluminium/ Magnesium Board/ PVC Foam	4mm to 28mm	5 kg	Internal & External
Wave	Signatures	90	Bianco Freshwater Pearl	120cm x 240cm	1	Yes	Aluminium/ Magnesium Board/ PVC Foam	4mm to 28mm	5 kg	Internal & External
Whisper	Signatures	92	Freshwater & Saltwater	120cm x 240cm	4	No	Aluminium/ Magnesium Board/ PVC Foam	4mm to 28mm	5 kg	Internal & External
3D Cube	Signatures	94	Freshwater & Saltwater	120cm x 240cm	2	Yes	Aluminium/ Magnesium Board/ PVC Foam	4mm to 28mm	5 kg	Internal & External
Natures Herringbone	Seasons	98	Bianco Freshwater Pearl	120cm x 240cm	2	Yes	Aluminium/ Magnesium Board/ PVC Foam	4mm to 28mm	5 kg	Internal & External
Foxglove	Seasons	100	Bianco Freshwater Pearl	120cm x 240cm	2	Yes	Aluminium/ Magnesium Board/ PVC Foam	4mm to 28mm	5 kg	Internal & External
Petal	Seasons	102	Bianco Freshwater Pearl	120cm x 240cm	2	Yes	Aluminium/ Magnesium Board/ PVC Foam	4mm to 28mm	5 kg	Internal & External
Ocean’s Edge	Seasons	104	Bianco Freshwater Pearl	120cm x 240cm	2	Yes	Aluminium/ Magnesium Board/ PVC Foam	4mm to 28mm	5 kg	Internal & External
Eucalyptus	Seasons	106	Bianco Freshwater Pearl	120cm x 240cm	2	Yes	Aluminium/ Magnesium Board/ PVC Foam	4mm to 28mm	5 kg	Internal & External
Seashell	Seasons	108	Bianco Freshwater Pearl	120cm x 240cm	2	Yes	Aluminium/ Magnesium Board/ PVC Foam	4mm to 28mm	5 kg	Internal & External
Impel	Seasons	110	Bianco Freshwater Pearl	120cm x 240cm	2	Yes	Aluminium/ Magnesium Board/ PVC Foam	4mm to 28mm	5 kg	Internal & External
Encircle	Seasons	112	Bianco Freshwater Pearl	120cm x 240cm	2	Yes	Aluminium/ Magnesium Board/ PVC Foam	4mm to 28mm	5 kg	Internal & External
Silver Birch	Seasons	114	Bianco Freshwater Pearl	120cm x 240cm	2	Yes	Aluminium/ Magnesium Board/ PVC Foam	4mm to 28mm	5 kg	Internal & External
Crystal	Seasons	116	Bianco Freshwater Pearl	120cm x 240cm	2	Yes	Aluminium/ Magnesium Board/ PVC Foam	4mm to 28mm	5 kg	Internal & External
Cascade	Seasons	118	Bianco Freshwater Pearl	120cm x 240cm	2	Yes	Aluminium/ Magnesium Board/ PVC Foam	4mm to 28mm	5 kg	Internal & External
Effervescent	Seasons	120	Bianco Freshwater Pearl	120cm x 240cm	2	Yes	Aluminium/ Magnesium Board/ PVC Foam	4mm to 28mm	5 kg	Internal & External

All Feature Wall Panels achieve
BS EN ISO 10545-03
BS EN ISO 10545-09
BS EN ISO 10545-12

Contact

International Head Offices

Siminetti – United Kingdom

Unit 6
Chipping Campden
Gloucestershire
United Kingdom
GL55 6JX
Tel: +44 (0)1386 897866

Siminetti – Europe

Herikerbergweg 292
Arena Business Park
Amsterdam
Netherlands
Tel: +31 (0)20 800 6222

Siminetti – USA

Miami Design District
Biscayne Boulevard,
Florida,
USA
Tel: +1 (0)305 340 0020

Regional Offices

Siminetti – United Kingdom

Siminetti Studio London
Tel: +44 (0)203 148 6868

Siminetti – Middle East

Rubelli Studio
Business Bay
Dubai, UAE
Tel: +971 (0) 4443 5012

Siminetti – Italy

Polaris Business Centre
Via Falcone, 7
20123,
MILAN, Italy

Siminetti – Canada

6685 Couture Boulevard,
MONTREAL.
Canada.H1P 3L7

Siminetti – Australia

Unit 20/75 Waterway Drive
Commera
QUEENSLAND 4209
Australia

Siminetti – South Africa

Montague Gardens
Cape Town 7441
SOUTH AFRICA

Sustainability



Siminetti: Proud producers of sustainable mother of pearl surfaces.

Siminetti is proud of its ethical and ecological credentials and takes the greatest care when sourcing its range of natural products, to ensure they meet strict ecological standards and are sourced from sustainable, farmed locations wherever in the world they are grown.

Our Freshwater mosaics are sourced from shell that is grown for the natural Freshwater Pearl industry. The shell, a bi-product of the Freshwater Pearl industry, is a waste product and Siminetti source the shell directly from the farms in Asia where the freshwater shells are grown.

Asia is the largest producer of Freshwater Pearls, producing some 1,500 metric tons per year and rather than simply discarding the shells from this production, Siminetti sources these shells and in conjunction with its partners produces our series of Freshwater Shell mosaics and decorative panels.

Our Mother of Pearl is sourced from Pacific communities who depend on sustainable relationships with the ocean lagoons in which they farm pearls or harvest them as a food source. Our suppliers have for generations respected the origin, growth and delicate nature of these shells. Harvesting is done in line with local Government Fishery laws and a constant communication with our suppliers ensure we are informed and accountable.

We only deal with raw material suppliers who have a full understanding of relevant practices and legislation to ensure consistent, high quality products. They must hold a fisheries export licence when appropriate, comply with biosecurity laws, provide Certificates of Origin and demonstrate evidence of the specific harvest area.

Our Mother of Pearl is sourced from regions such as Australia, Indonesia, the Philippines, the Pacific Islands, Fiji, the Solomon Islands and Tahiti. Each of our Mother of Pearl shells grows in specific regions based on water temperatures and climates.

Siminetti absolutely opposes the use of overfishing and exploitation of our World's sea beds and actively engages with ocean charities who look to sustain our oceans for the betterment of marine life and the conservation for our futures.

© 2021 Siminetti. All rights reserved.

No part of this publication may be reproduced in any material form (including photocopying or storing it in any medium by electronic means and whether or not transiently, or incidentally to some other use of this publication) without the written permission of the copyright owner.

Application for the copyright owner's permission to reproduce any part of this publication should be addressed to Siminetti. Limitations in the reprographics process mean absolute colour accuracy cannot be guaranteed. If required samples can be provided where colour accuracy is required.

Siminetti reserves the right to alter specification and designs without prior notice.